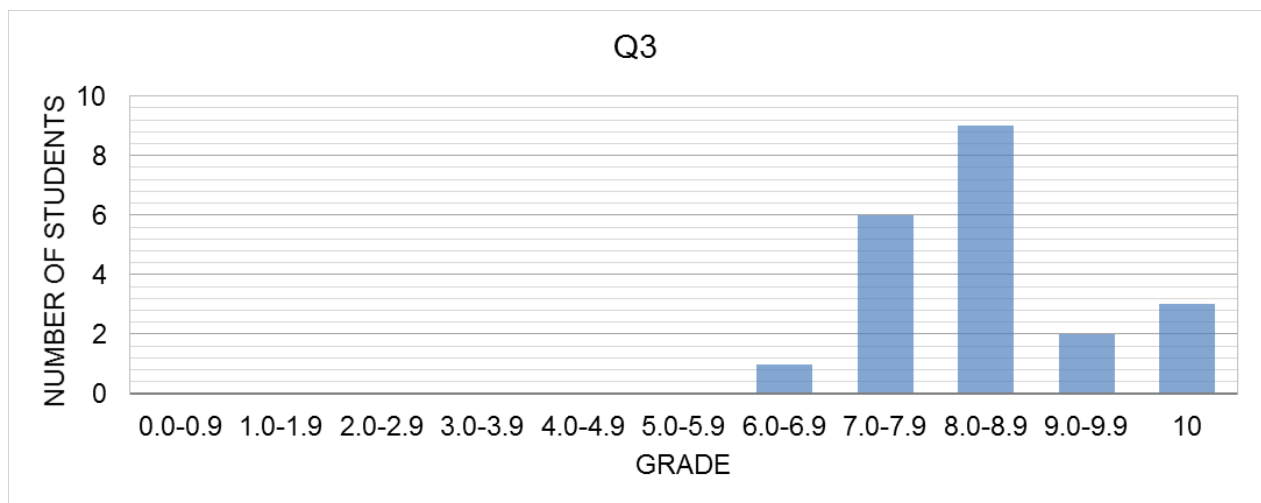


QUIZ 3 – Report

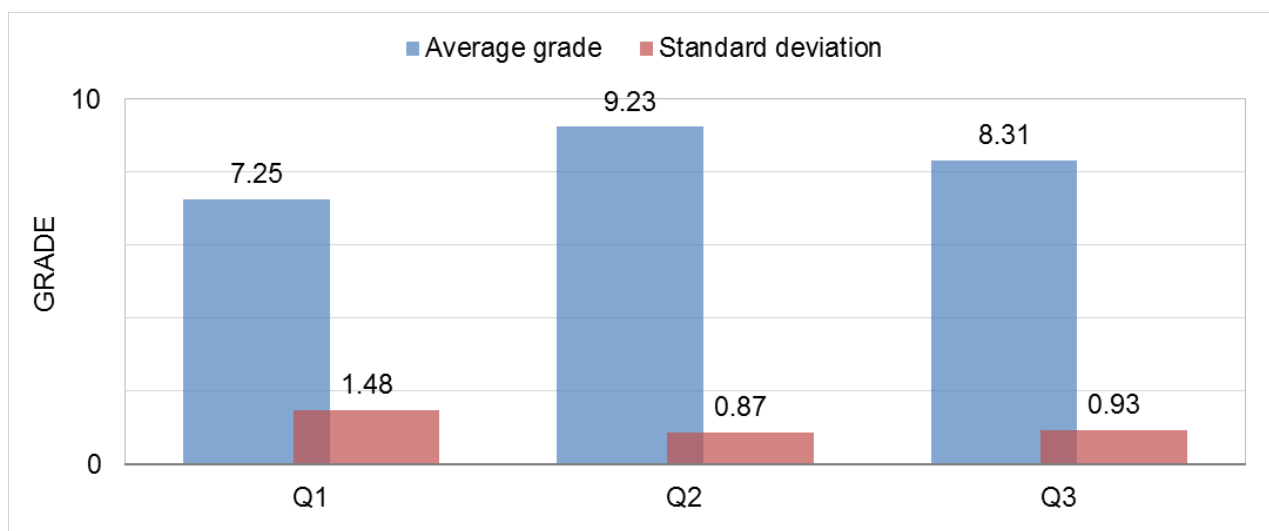
General

Total number of students	24
Attended	21
Missed	3
Average grade	8.31
Standard deviation of grades	0.93

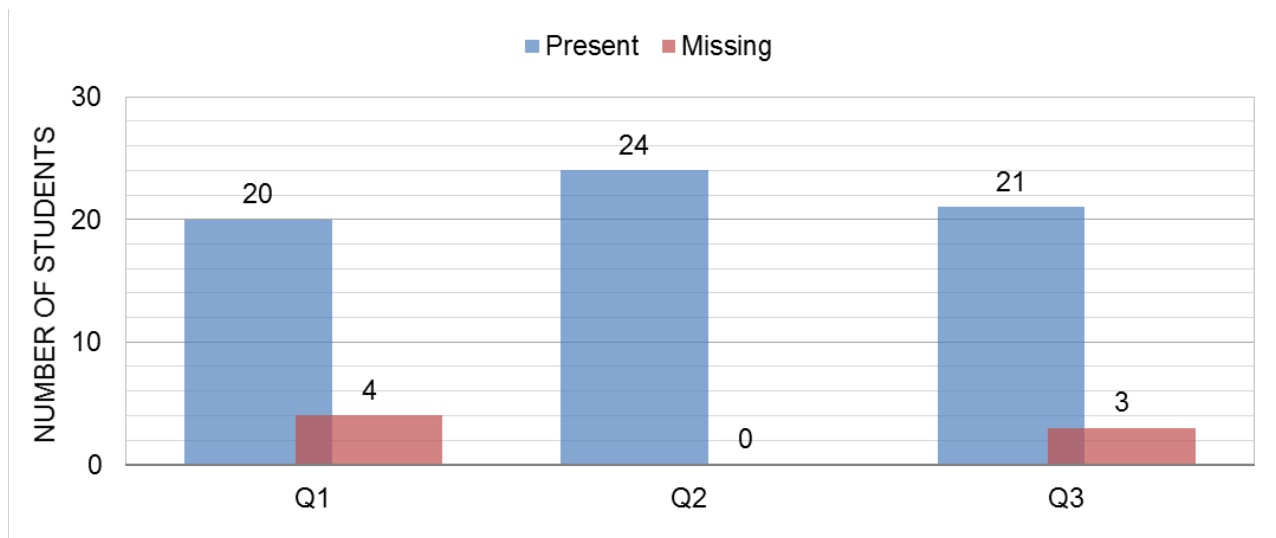
Grade distribution



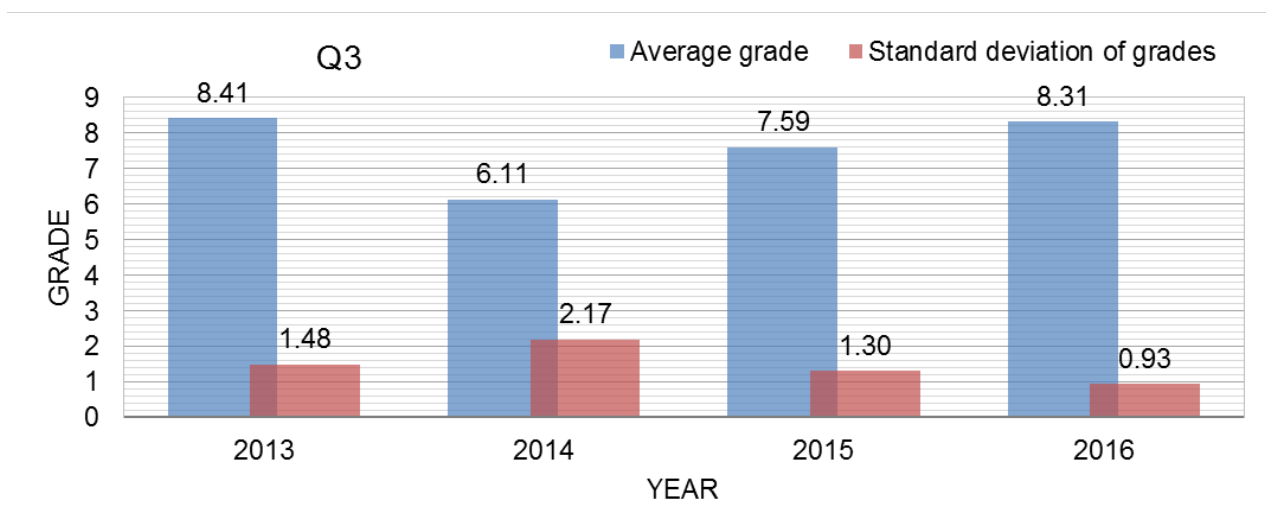
Grade history



Attendance history



Comparison with last three years



Comments

- Some students did not treat the geometry as a 2D section; instead, they used cylindrical coordinates.
- Some student did not include the inlet in the momentum equation.
- Some students, when computing $\underline{V} \cdot \underline{n}$ at the outlet section, did not use the angle $\theta/2$; instead, they used θ .