

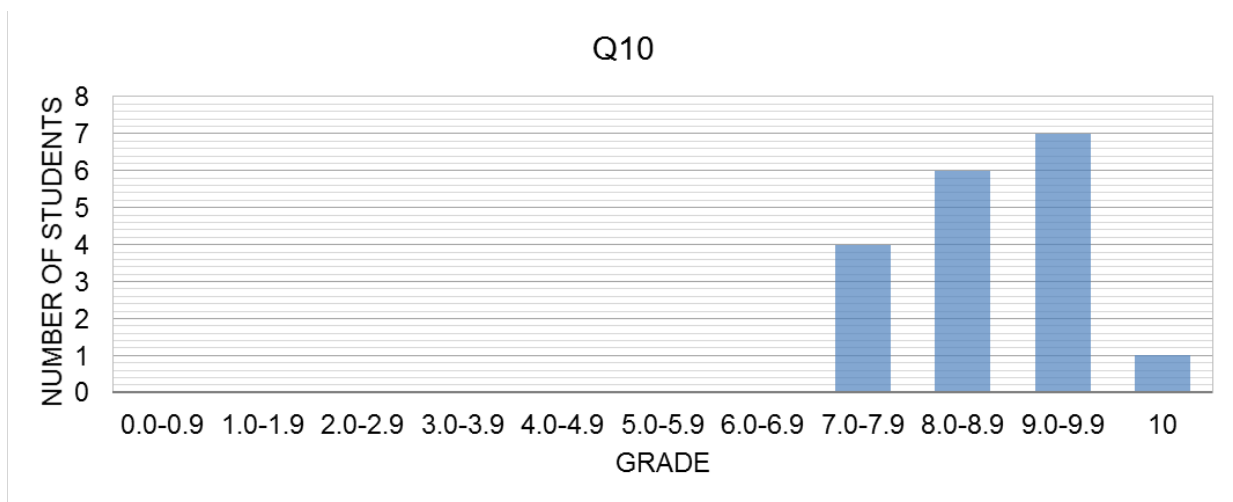
QUIZ 10 – Report

(Laminar pipe flow)

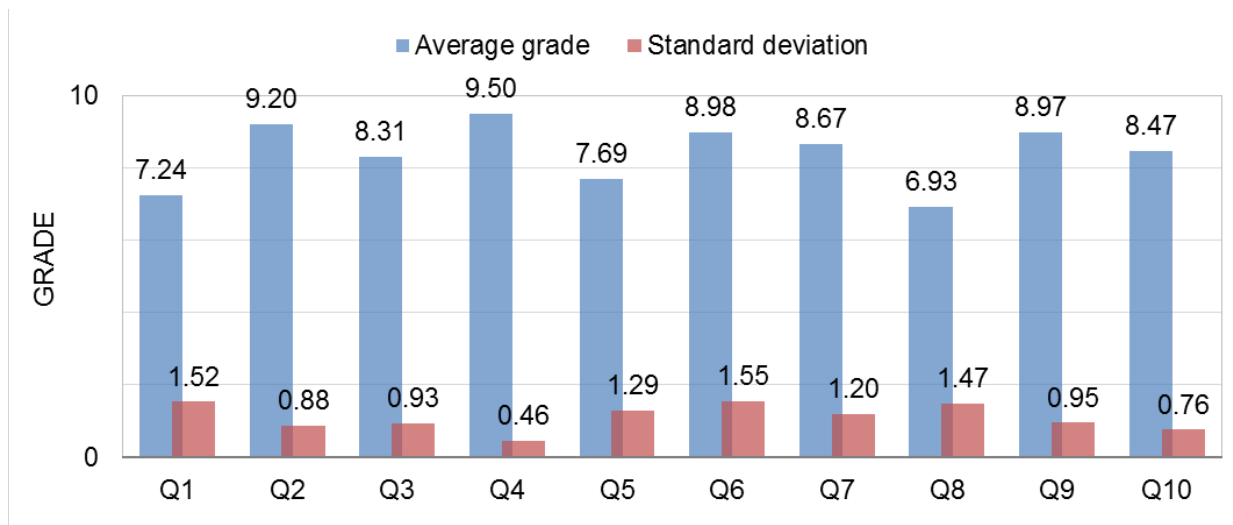
General

Total number of students	23
Attended	18
Missed	5
Average grade	8.47
Standard deviation of grades	0.76

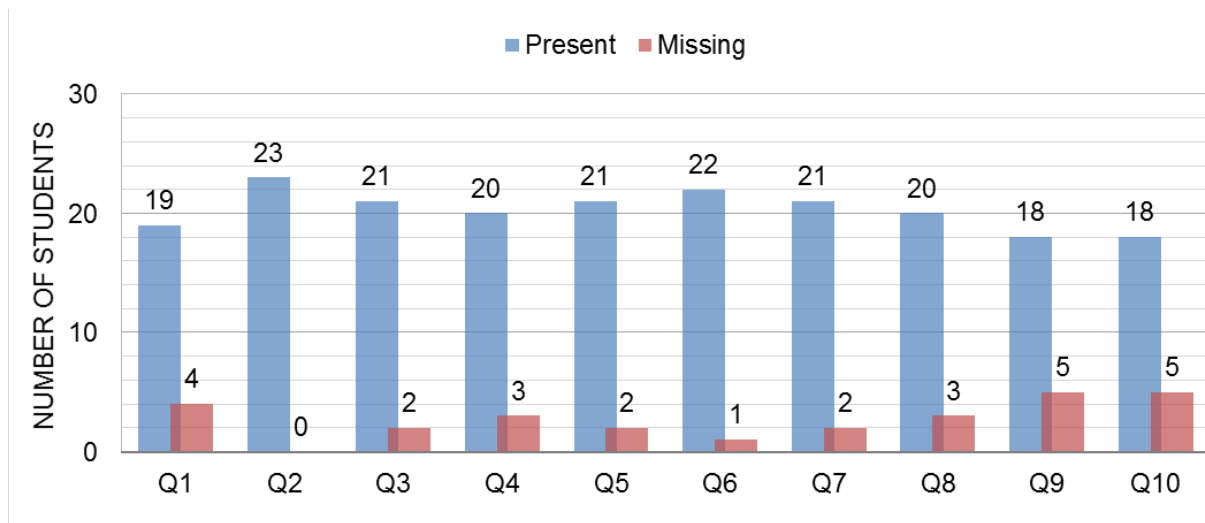
Grade distribution



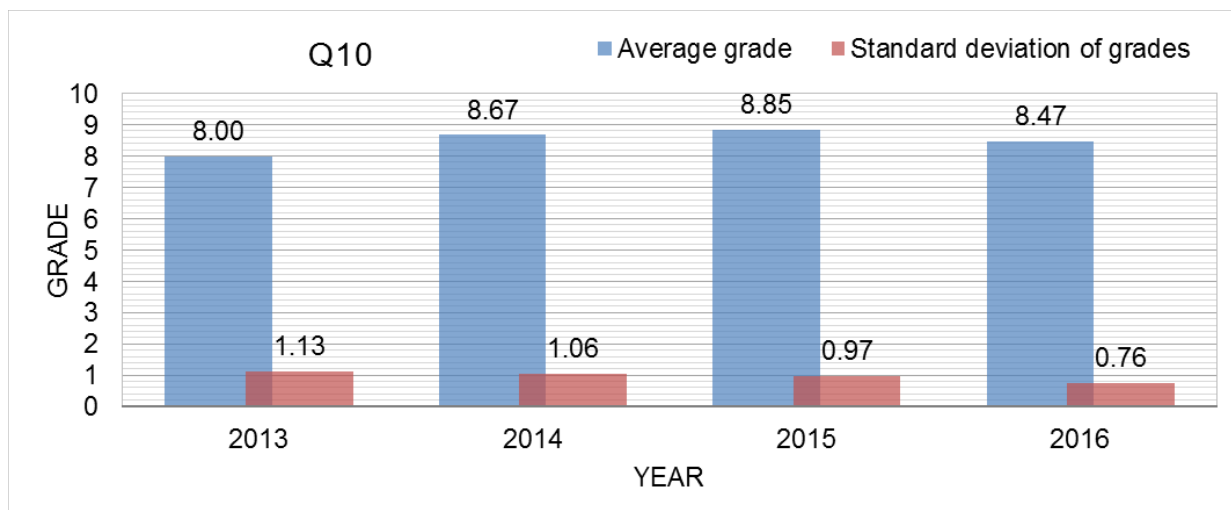
Grade history



Attendance history



Comparison with last three years



Comments

- Few students made mistakes in computing the pressure drop.
- Some students did not consider that, since the flow rate was constant, when halving the diameter the velocity would change.
- Some students did not re-calculate the pressure drop.