

# HW 11 – Report

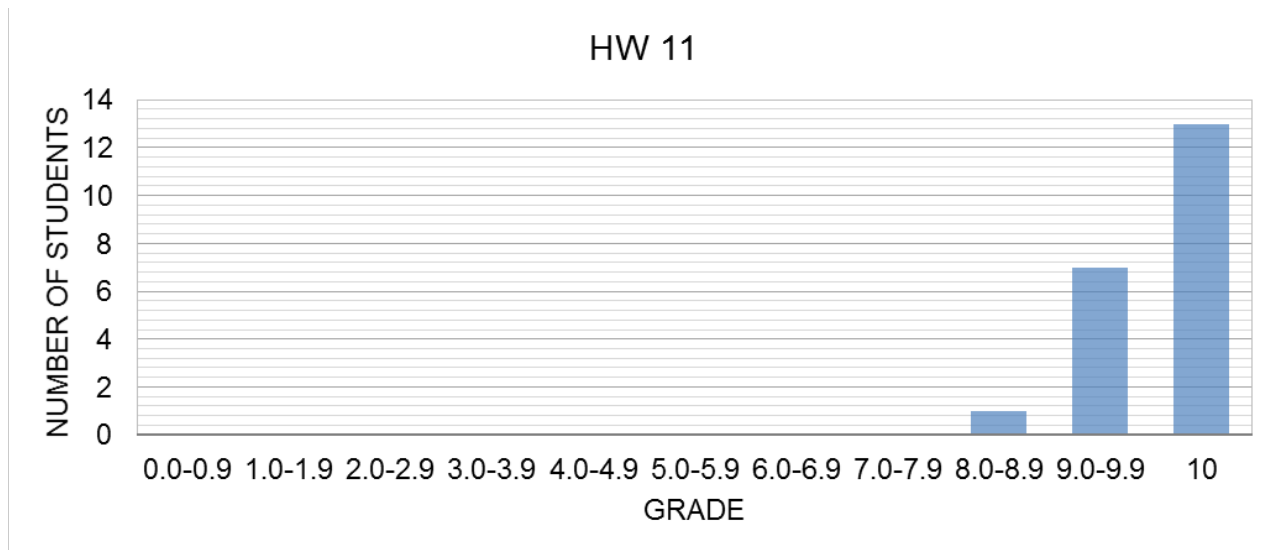
## General

Total number of students	23
Number of submitted HW	21
Number of not submitted HW	2
Number of problems	4
Average grade	98.15
Standard deviation of grades	3.57

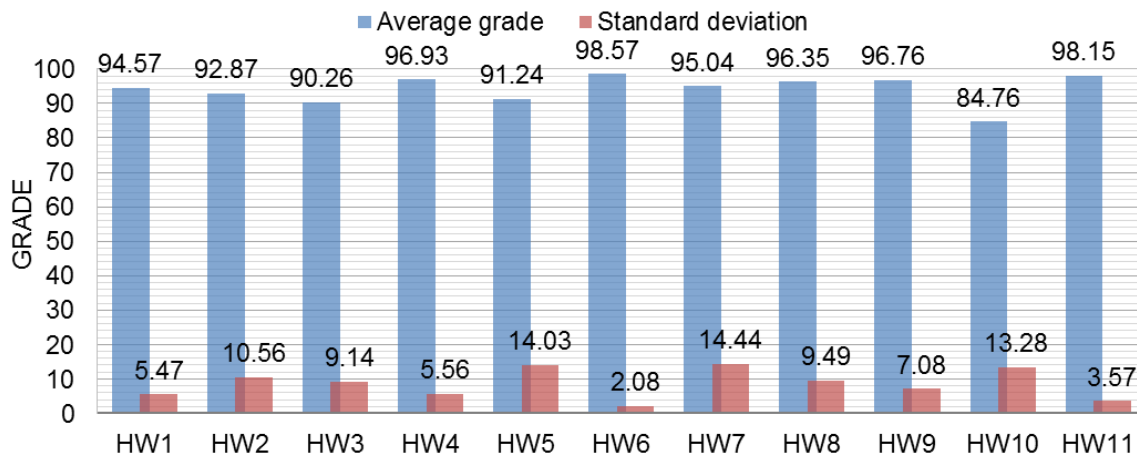
## Individual problem breakdown

Problem	P7.7	P7.9	P7.17	P7.25
Average grade	9.88	9.45	10.00	9.93
Standard deviation of grades	0.35	1.02	0.00	0.18

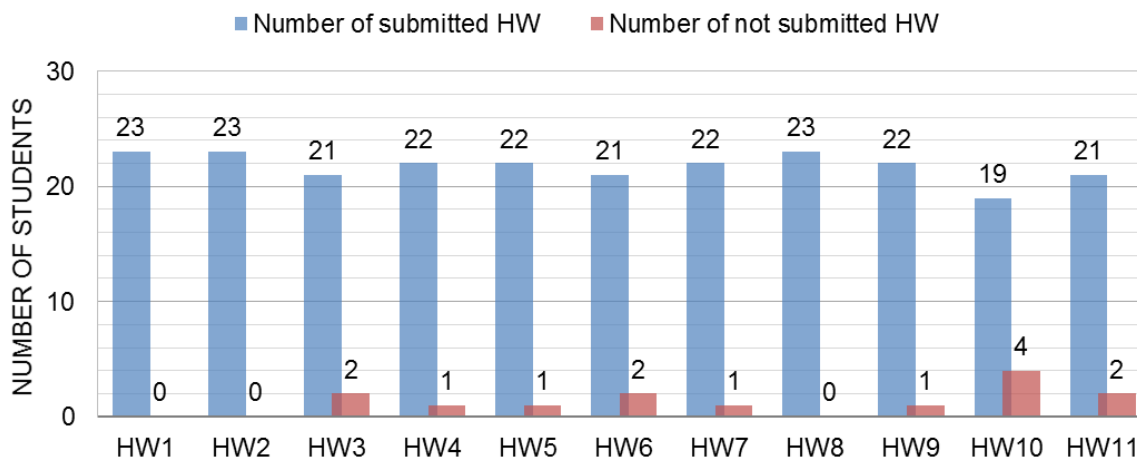
## Grade distribution



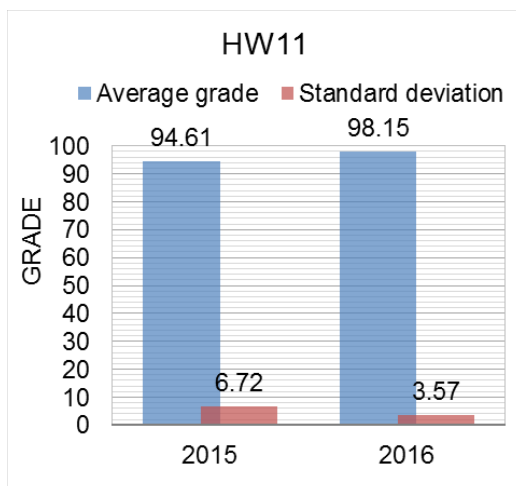
## Grade history



## Submission history



## Comparison with last year



## **Comments**

- Few students did not carry out the complete procedure asked in P7.9; they did not compute either  $H$ ,  $c_f$ , or  $\frac{\delta^*}{x}$ .
- Few students made calculation mistakes in computing the number of plates in P7.25.