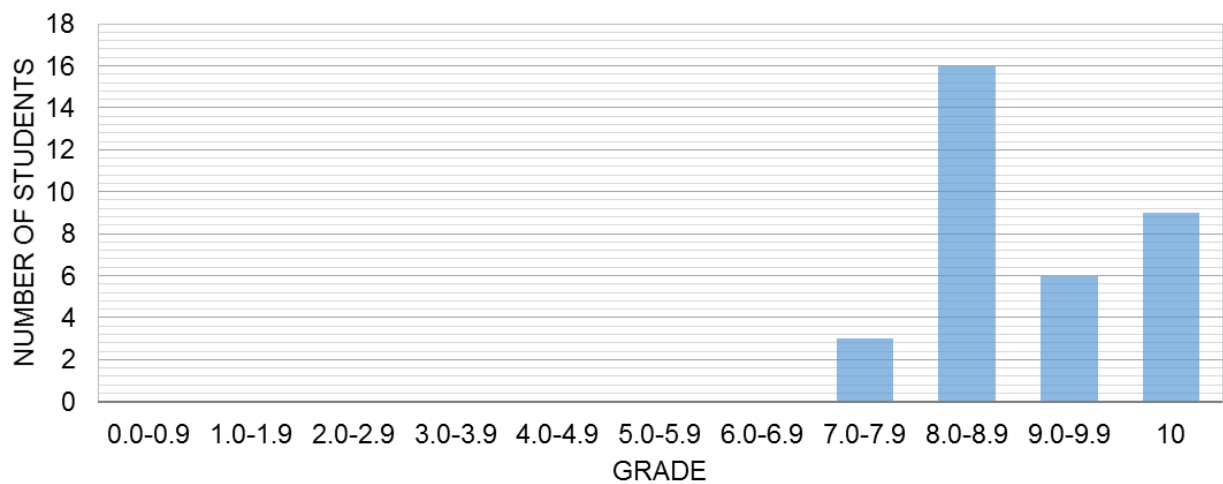


## QUIZ 4 – Report

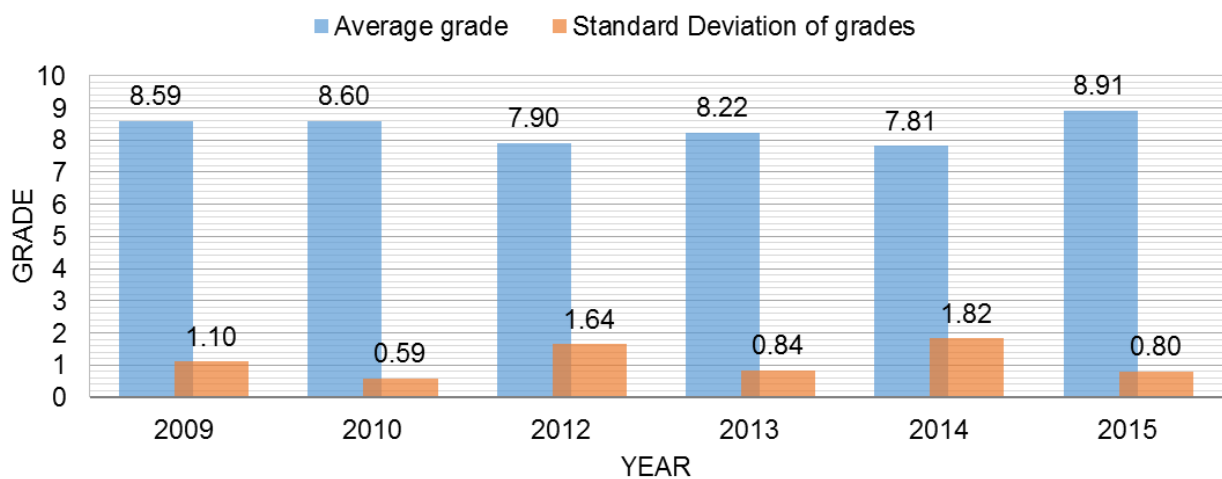
### General

Total number of students	42
Attended	34
Missed	8
Average grade	8.91
Standard deviation of grades	0.80

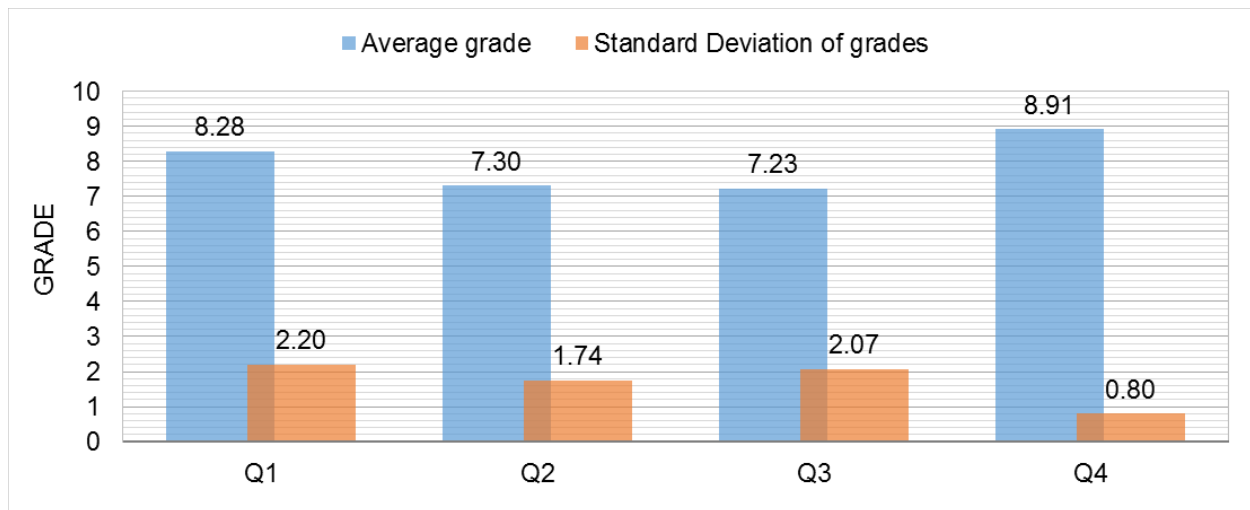
### Grade distribution



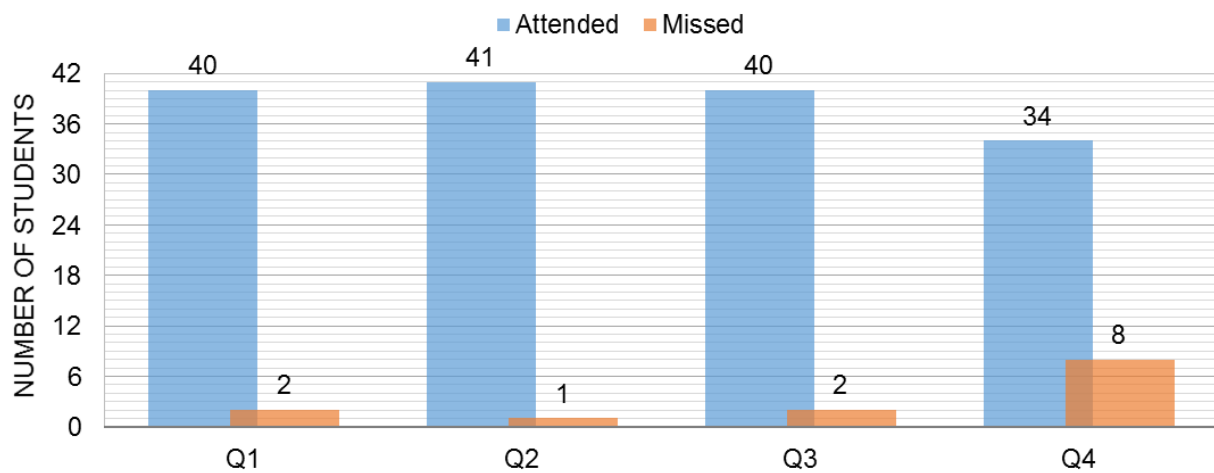
### Comparison with last five years



## Grade history



## Attendance history



## Comments

- Most of the students considered the left end of the pipe (located at -6m from the free surface) as section 1 when using the energy equation, instead of the free surface itself.