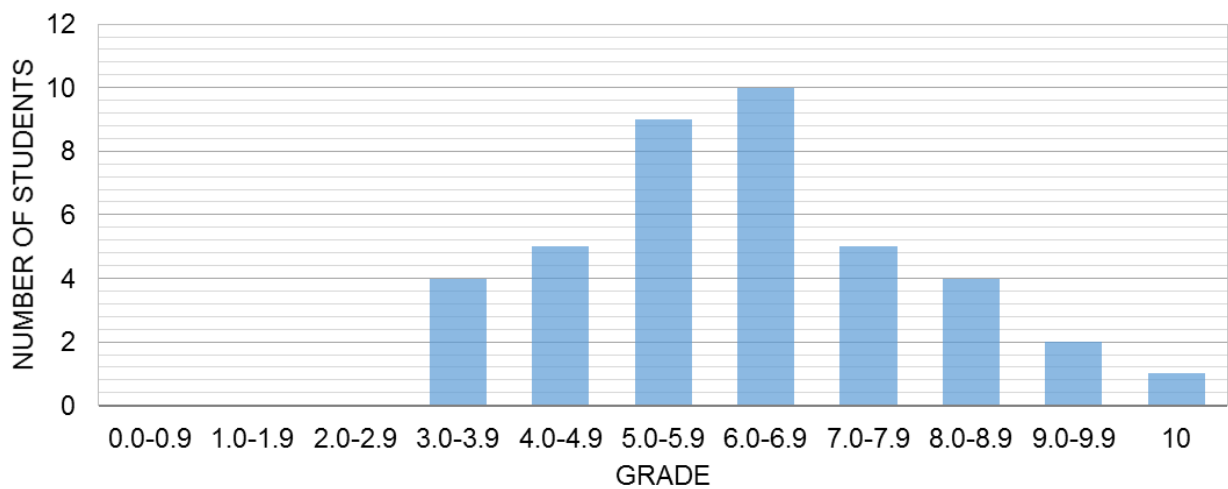


QUIZ 14 – Report

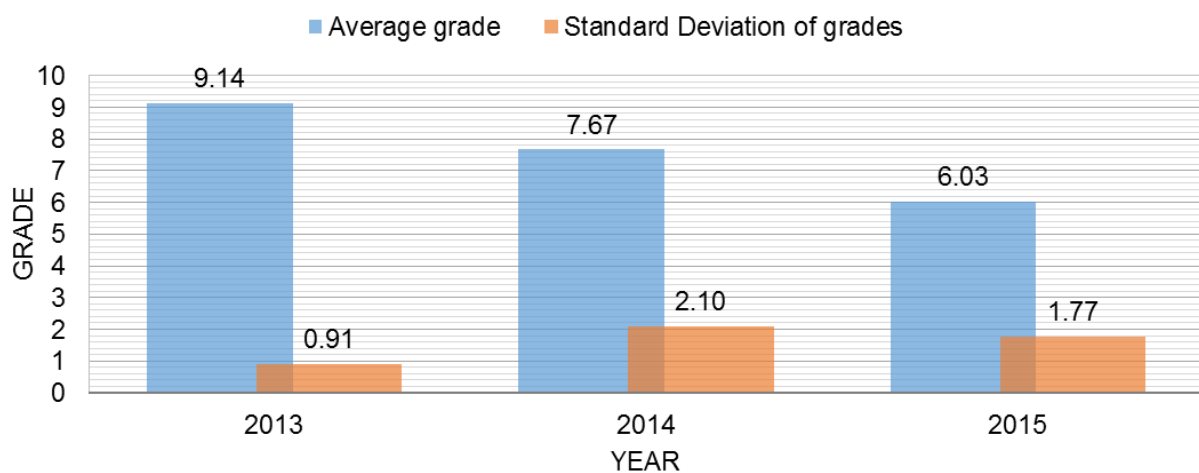
General

Total number of students	41
Attended	40
Missed	1
Make-up	0
Average grade	6.03
Standard deviation of grades	1.77

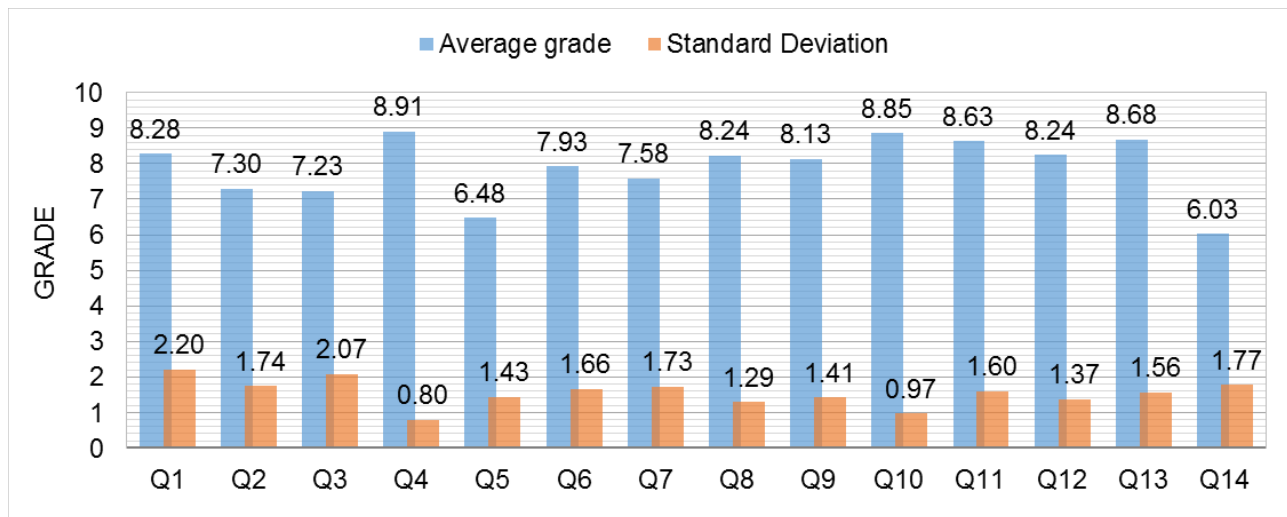
Grade distribution



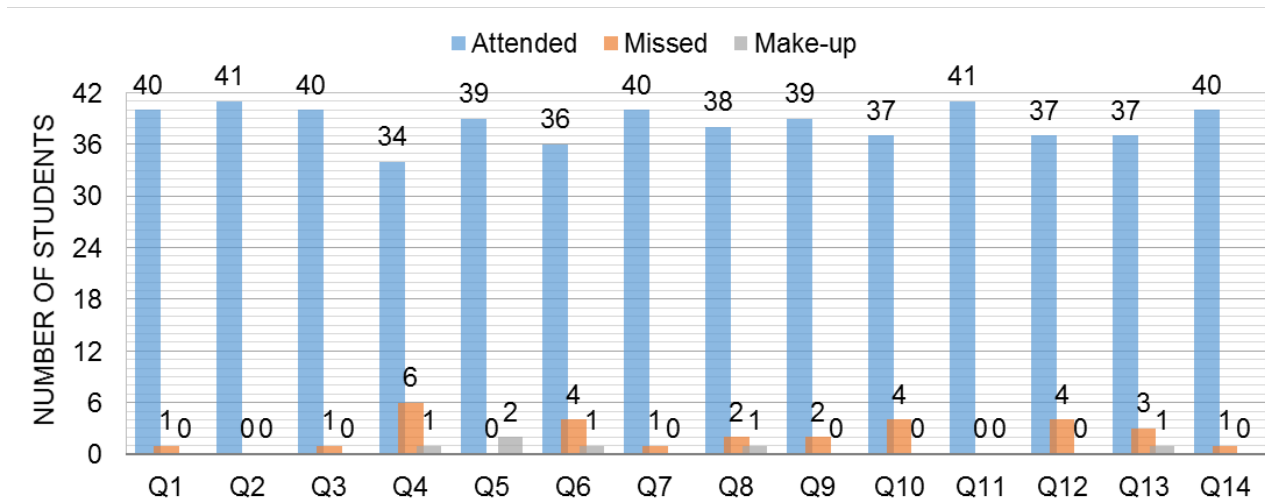
Comparison with past years



Grade history



Attendance history



Comments

- Many students applied wrong boundary conditions:
 - For the point on the surface ($r = a$): they used $v_r = U$, instead of $v_r = 0$.
 - For the point at $x = 0$ and $y = \infty$: they used $v_r = U$ or $v_\theta = 0$, instead of $v_\theta = U$.
- Many students attempted to find the stream function. It was not needed since the potential function was given in the problem statement.
- Some students did calculation mistakes in deriving the velocity component from the potential function.
- Some students did not solve at all the second part of the problem.
- Very few students almost did not attempt to solve the quiz at all.