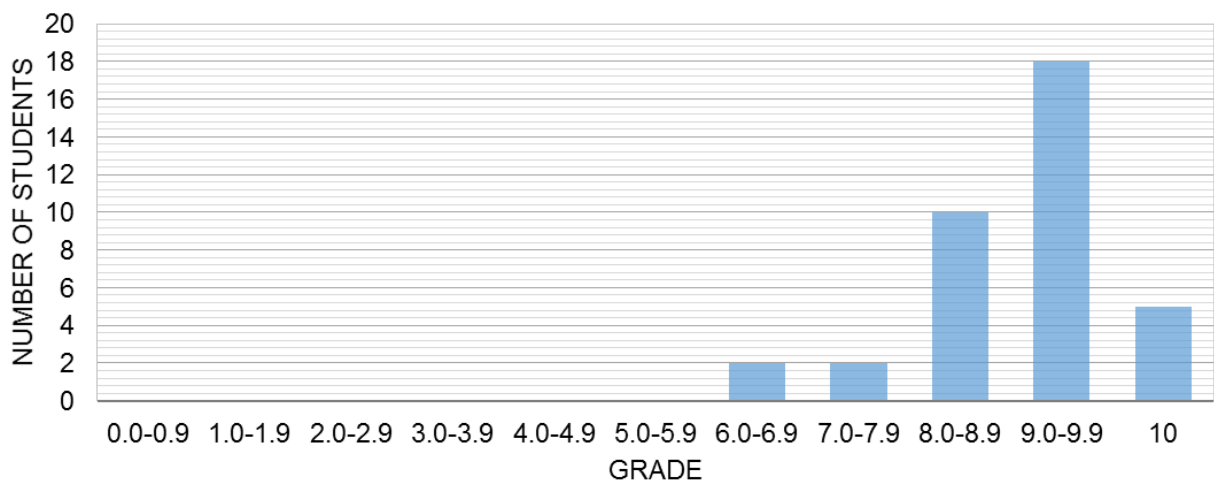


QUIZ 10 – Report

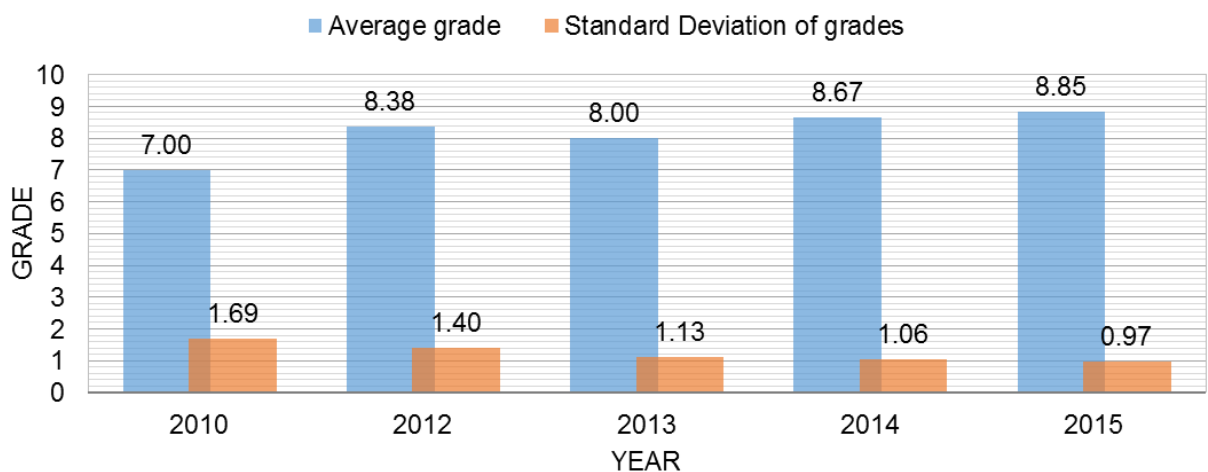
General

Total number of students	41
Attended	37
Missed	4
Make-up	0
Average grade	8.85
Standard deviation of grades	0.97

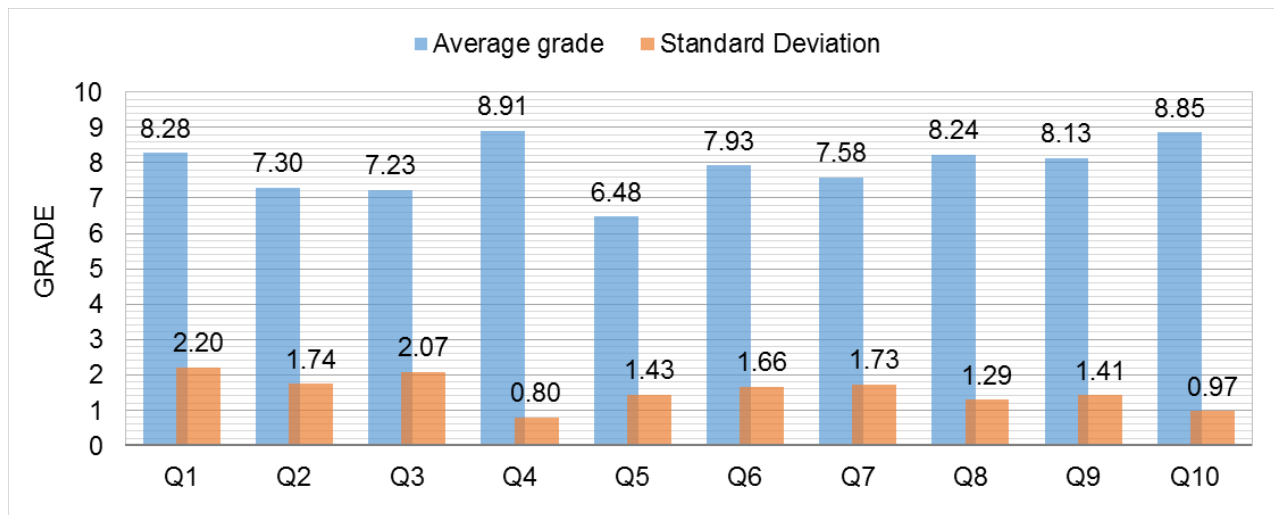
Grade distribution



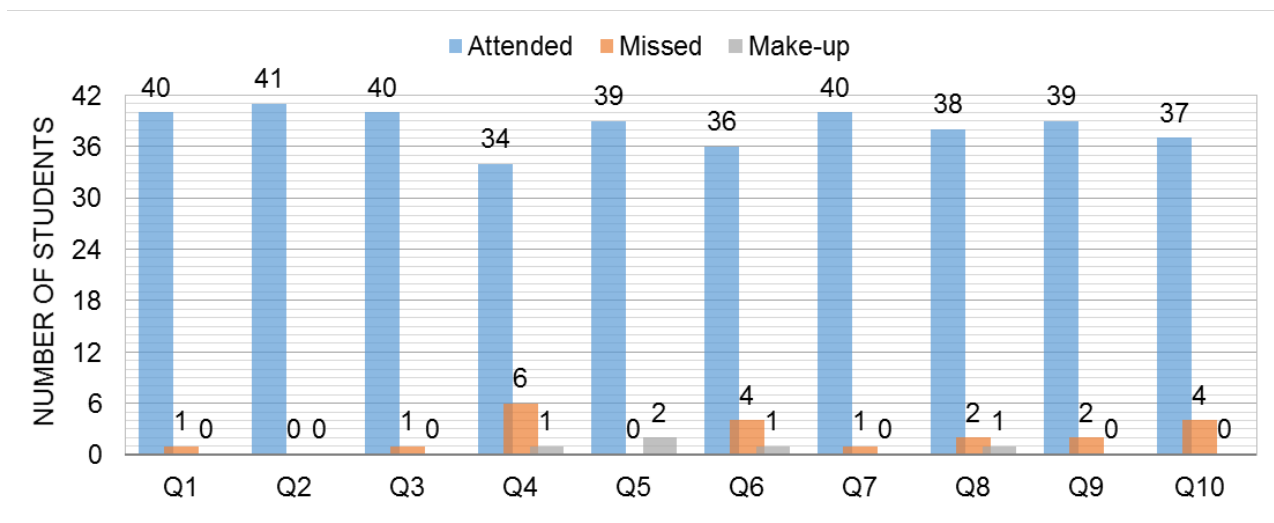
Comparison with last four years



Grade history



Attendance history



Comments

- Most of errors have been numerical calculation mistakes.
- Very few students assumed $Re = 2000$ in part (a), instead of solving the energy equation.