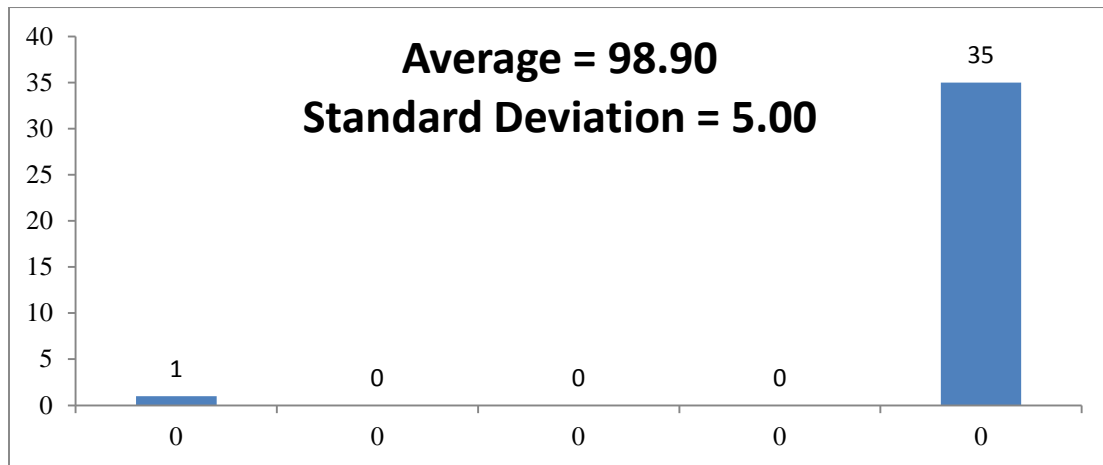


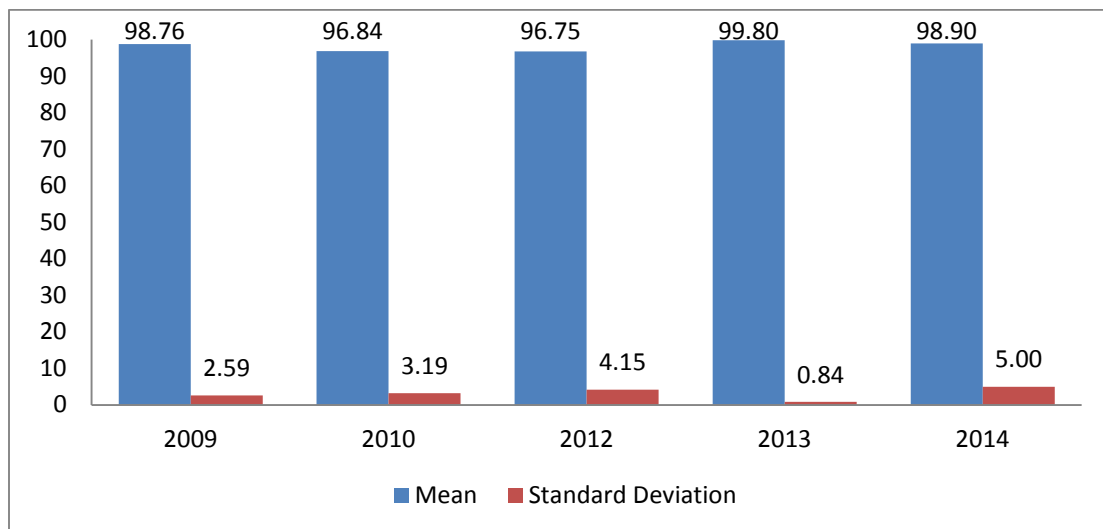
# Report of CFD Lab 4

|               | Number of Students |
|---------------|--------------------|
| Total         | 39                 |
| Submitted     | 36                 |
| Not Submitted | 3                  |

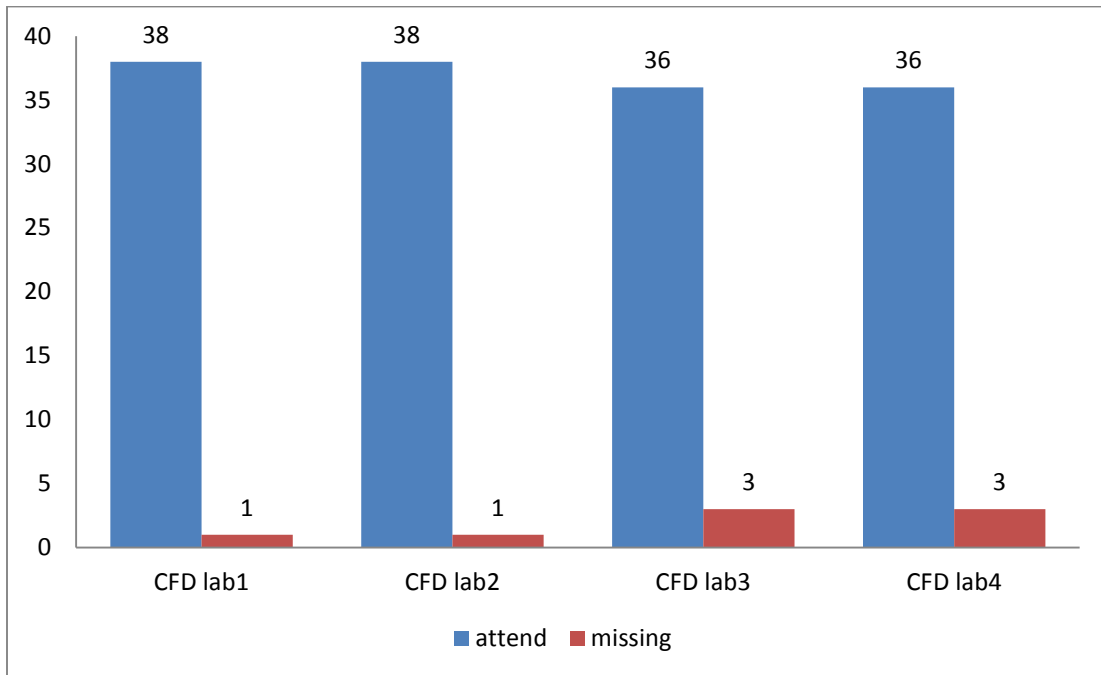
## GRADE DISTRIBUTION



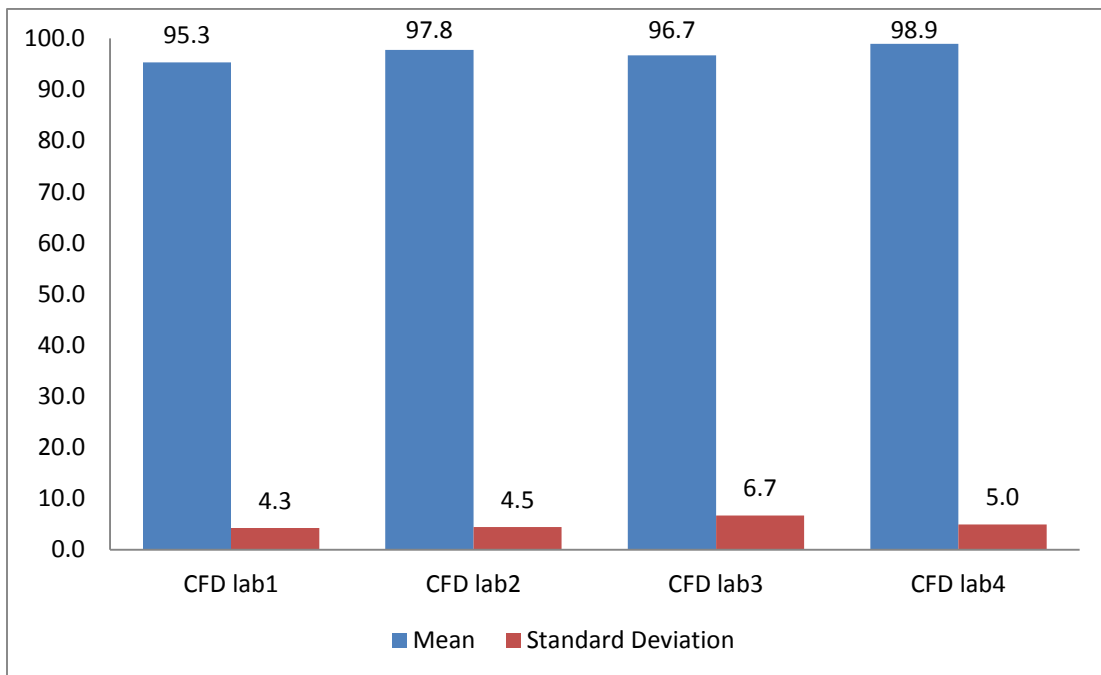
## COMPARISON WITH LAST 4 YEARS



### **SUBMISSION HISTORY (Fall 2014)**



### **COMPARISON OF CFD LAB (Fall 2014)**



## **1. Common mistake**

- Some students provided wrong streamline figures.
- Some students did not provide modified TKE.

## **2. Feedback**

### *2.1. Positive*

- Most students are satisfied with lab manual and familiar with the ANSYS program.

### *2.2. Negative*

- Some students suffered from animation issue.
- Some students think more detailed instruction will be helpful.