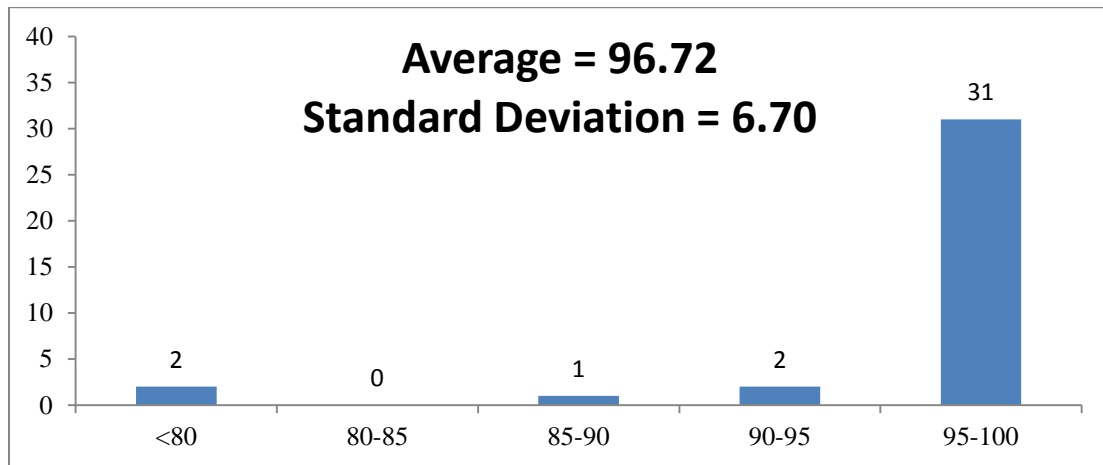


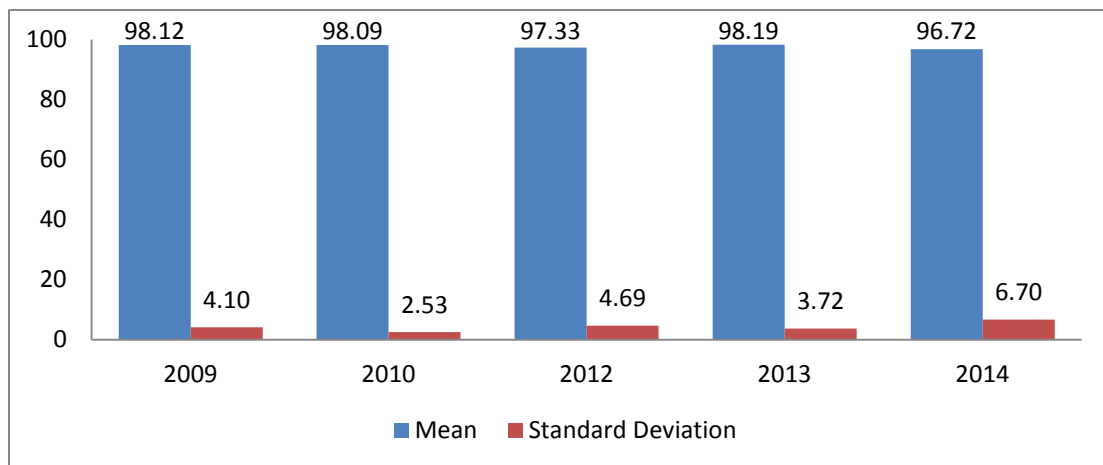
Report of CFD Lab 3

	Number of Students
Total	36
Submitted	36
Not Submitted	0

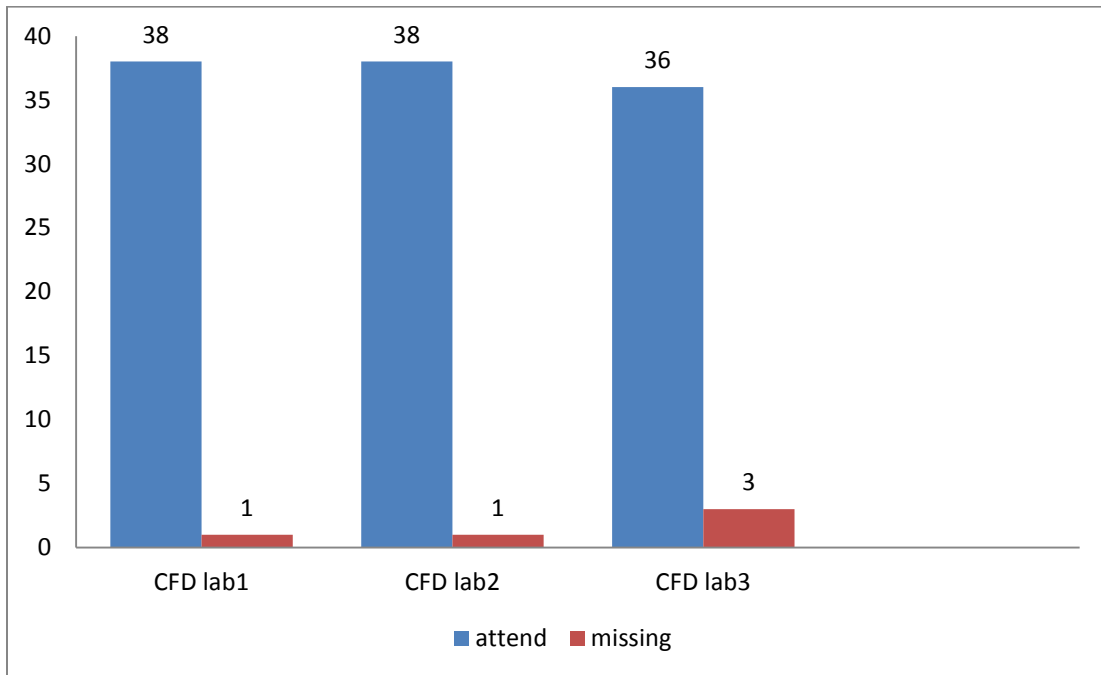
GRADE DISTRIBUTION



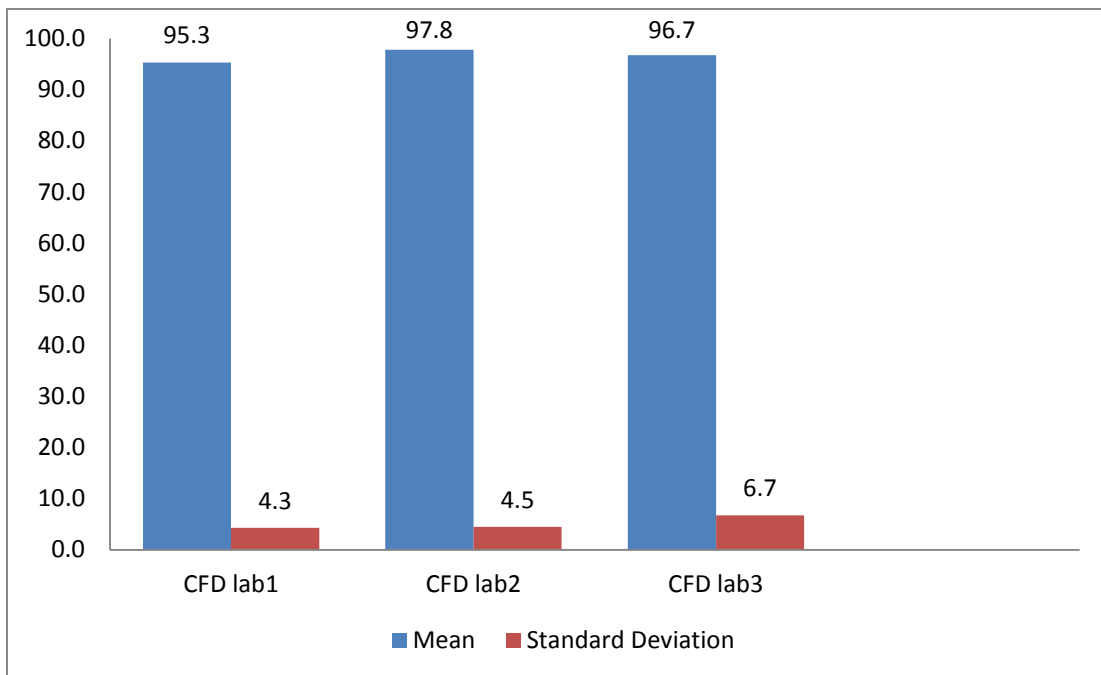
COMPARISON WITH LAST 4 YEARS



SUBMISSION HISTORY (Fall 2014)



COMPARISON OF CFD LAB (Fall 2014)



1. Common mistake

- Many students failed to provide modified u and modified TKE as shown in the instruction manual.
- Some students did not compare modified u and modified TKE with EFD.
- Many students did not complete section 3.3 discussion.
- Some reports did not provide conclusion.

2. Feedback

2.1. Positive

- Most students are satisfied with lab manual and they believed manual is clearly described to follow and get results.

2.2. Negative

- Some students think more detailed instruction for the modified u and TKE plot will be helpful.
- Some students think more detailed instruction for the geometry definition will be helpful.