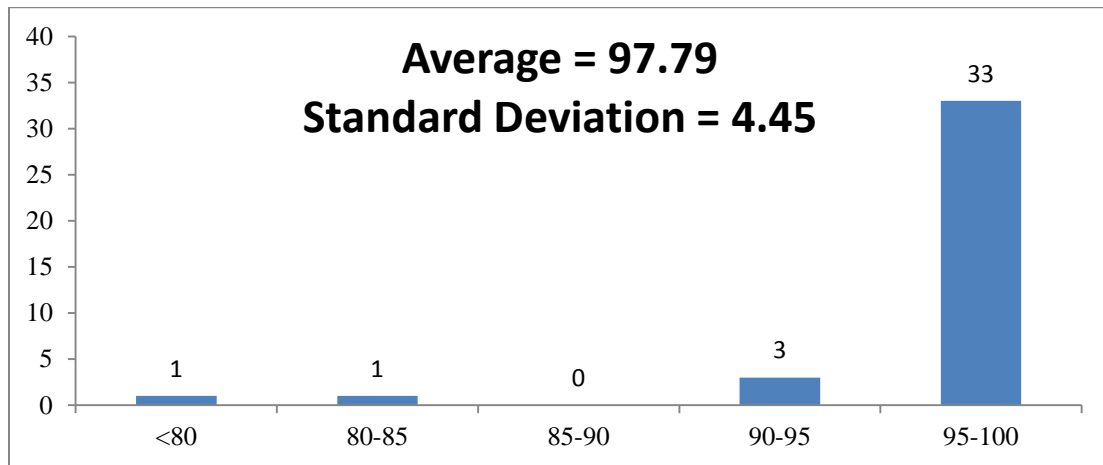


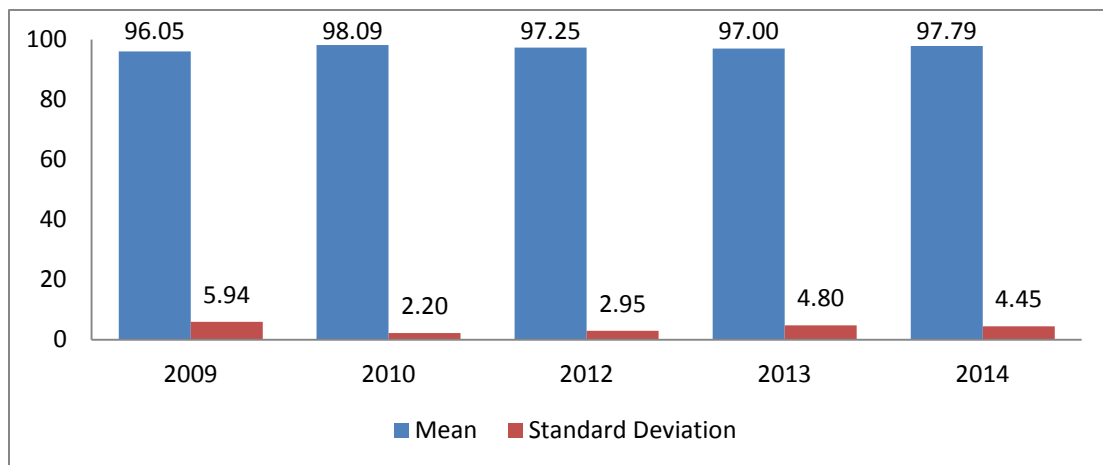
Report of CFD Lab 2

| | Number of Students |
|---------------|--------------------|
| Total | 39 |
| Submitted | 38 |
| Not Submitted | 1 |

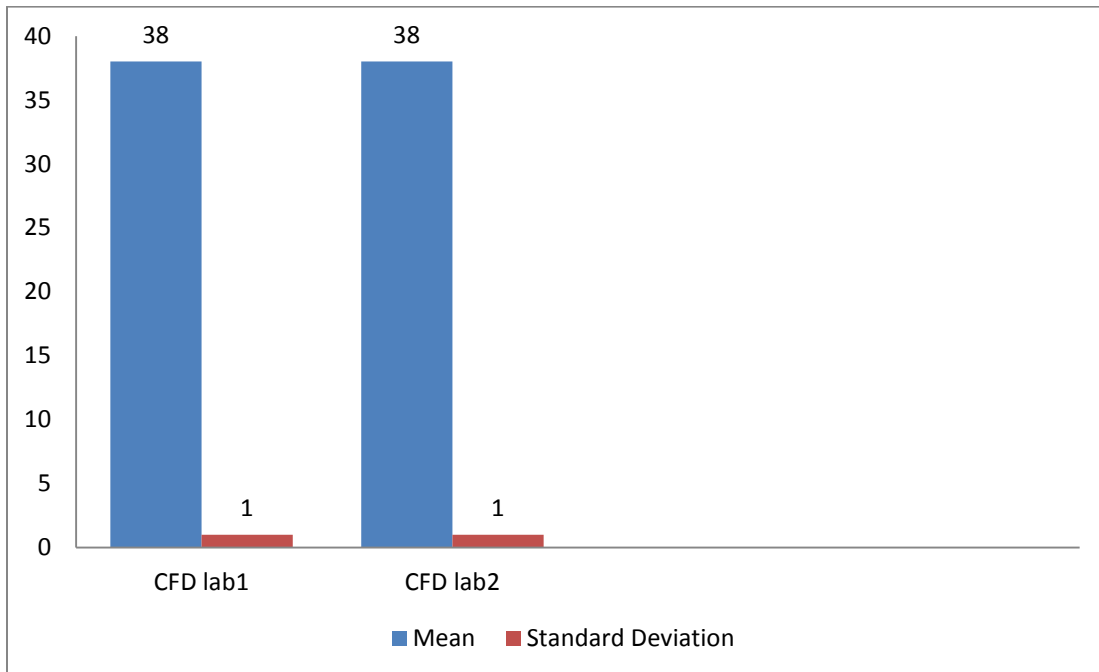
GRADE DISTRIBUTION



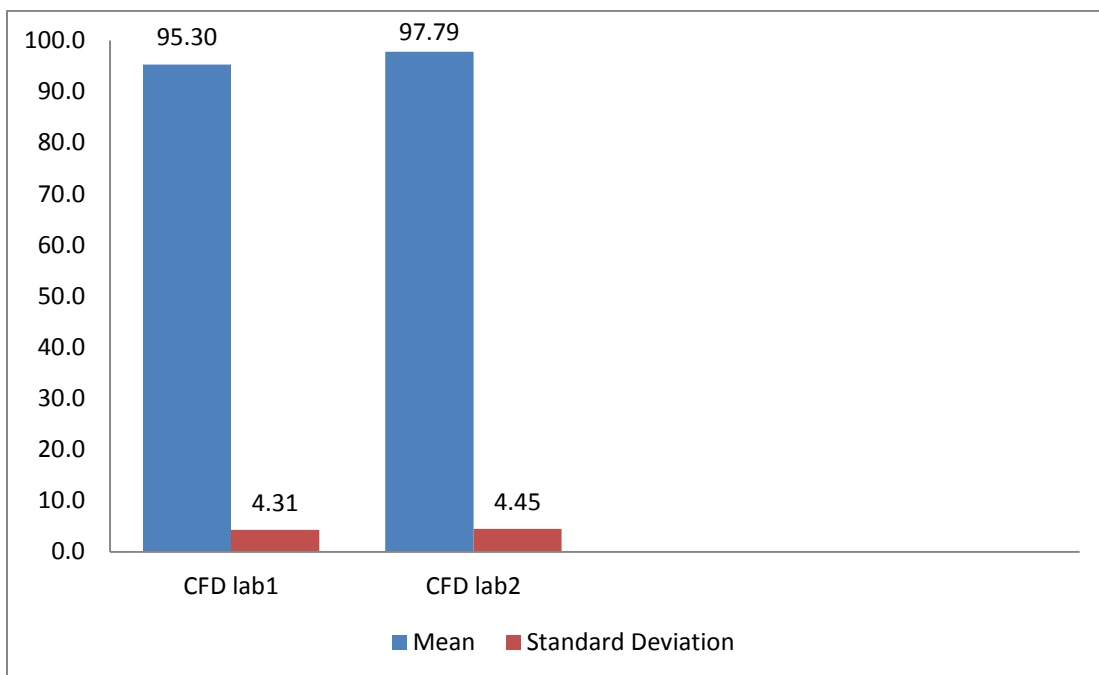
COMPARISON WITH LAST 4 YEARS



SUBMISSION HISTORY (Fall 2014)



COMPARISON OF CFD LAB (Fall 2014)



1. Common mistake

- Some students did not do V&V analysis of lift coefficient
- Some students missed some of figures and tables asked to make in section 9.3 and 9.4
- Many did not make discussion about section 9.5.2 question.
- Some reports were made poorly and hard to read and understand.

2. Feedback

2.1. Positive

- Most students are satisfied with lab manual and they believed manual is clearly described to follow and get results.
- Some students would like to study the effect of turbulent models. Turbulence model studies are part of the CFD Lab 3.

2.2. Negative

- Some students think the organization of the exercise question needs improvement.
- Some think that it will be useful and clear to provide the reason the data and analysis should be made given in the exercise section.