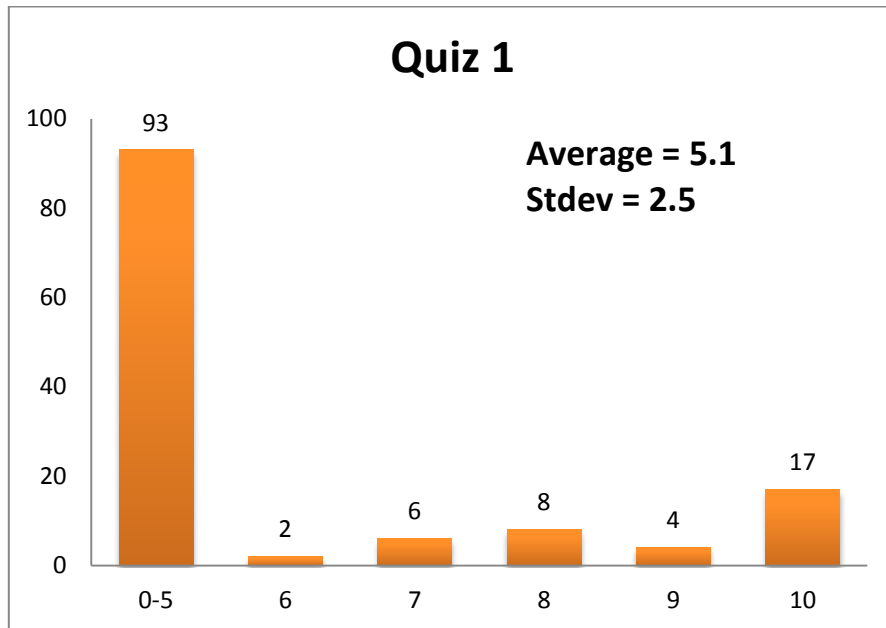
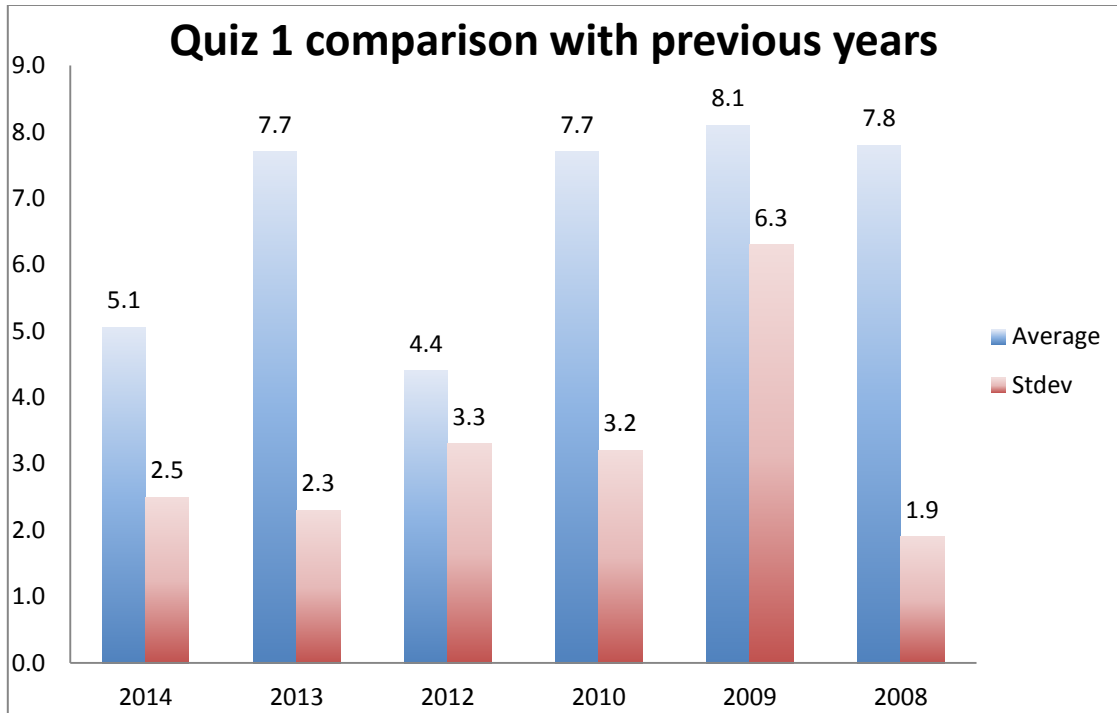


Report of Quiz 1

1. Summary

	Number of Students
Total	136
Attended	130
Missed	6
Makeup	0





2. Comments

- 1) Students performed poorly compared to previous years.
- 2) The average score and standard deviation for homework problem on shear stress is 9.6 and 1.2 respectively. The homework problem was substantially more difficult than the quiz problem.
- 3) Many students (scores between 0-5) did not use the correct equation for the shear stress ($\tau = \mu \frac{du}{dy}$).
- 4) Many students evaluated velocity function at the wall instead of shear stress function.