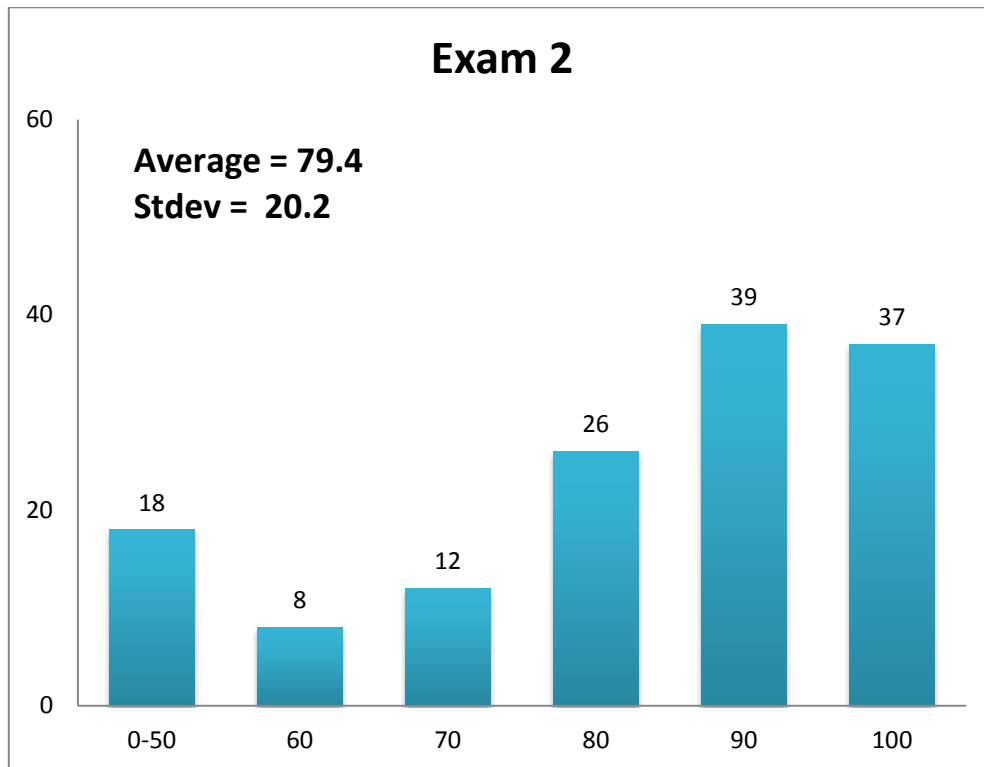


Report of Exam 2

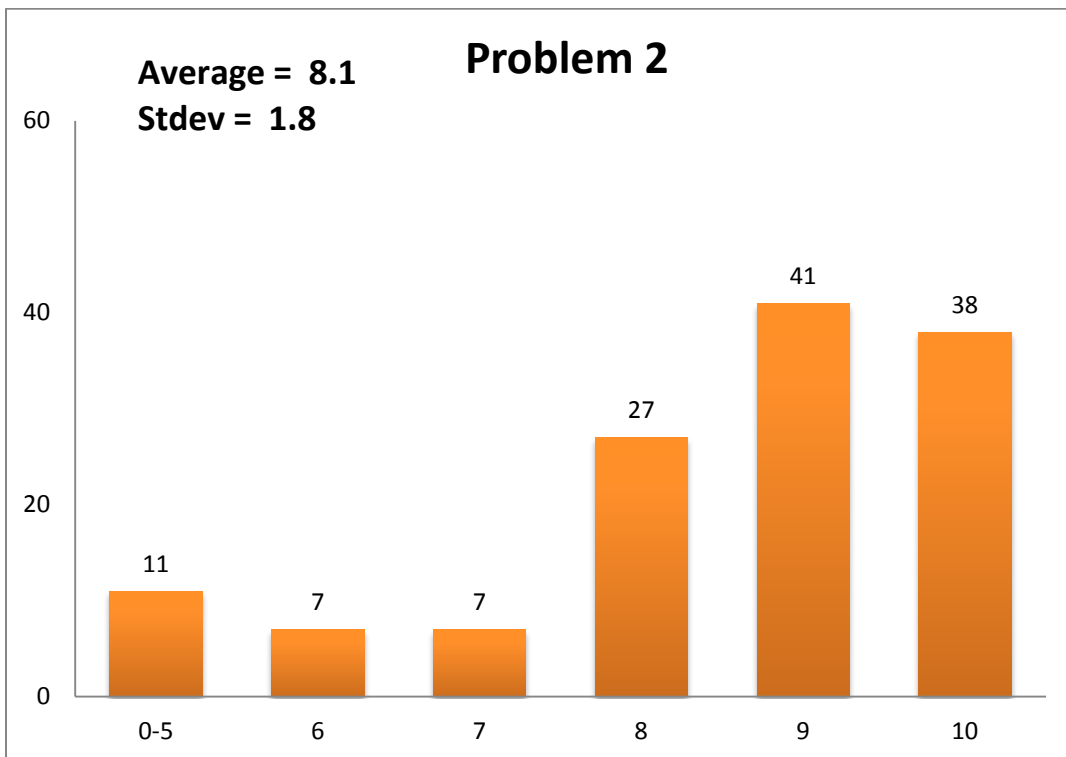
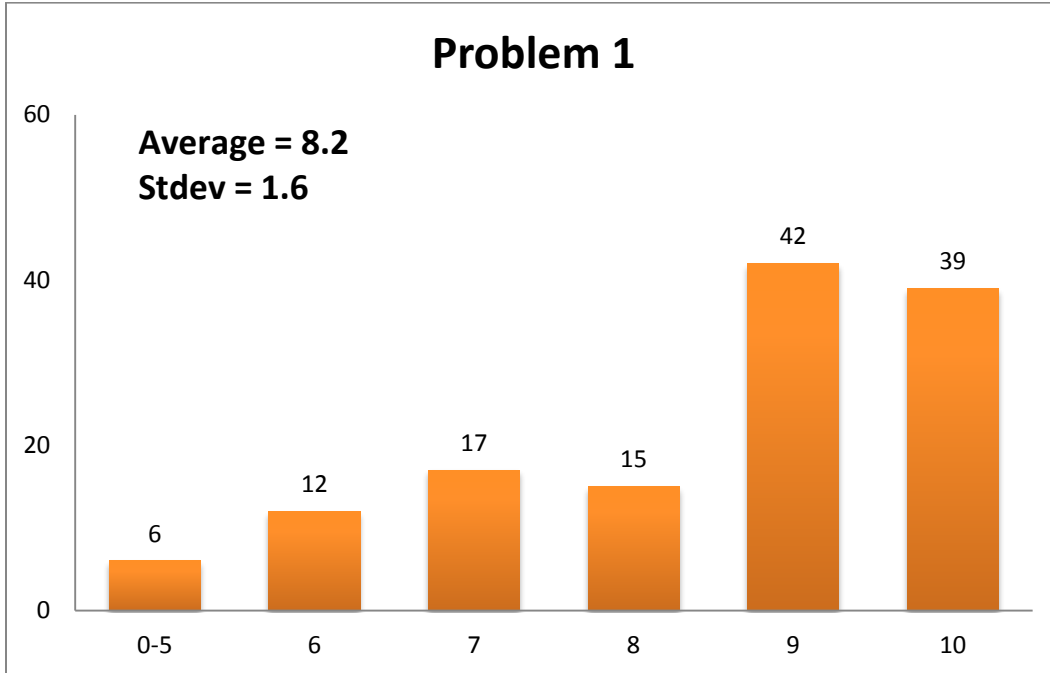
1. Summary

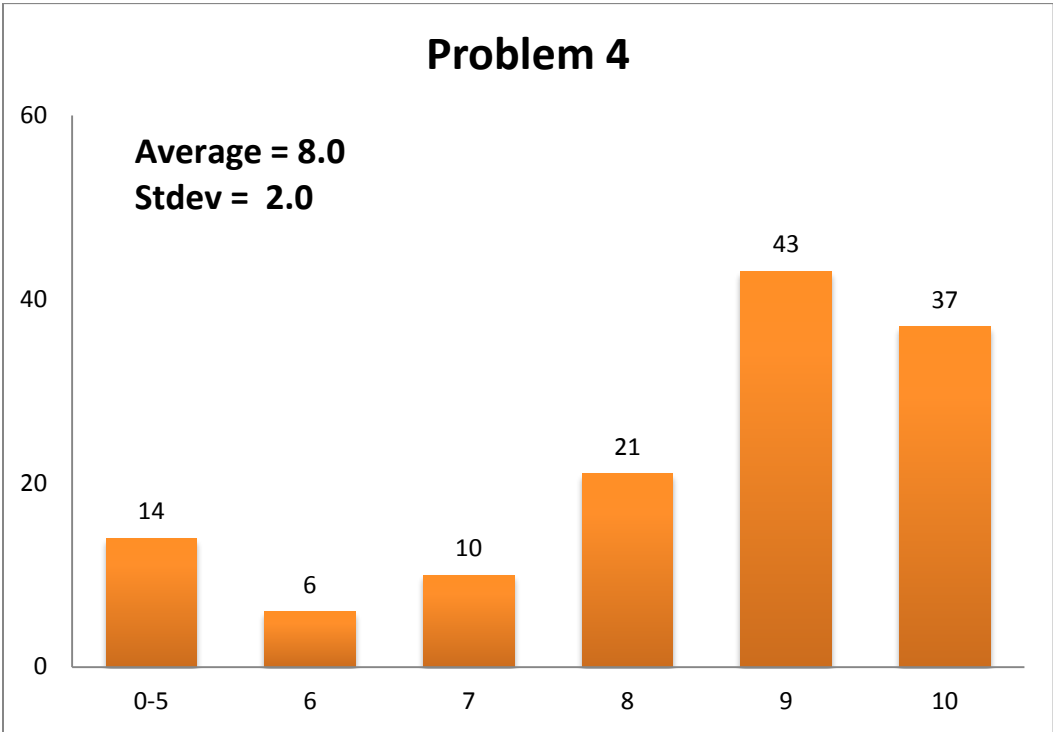
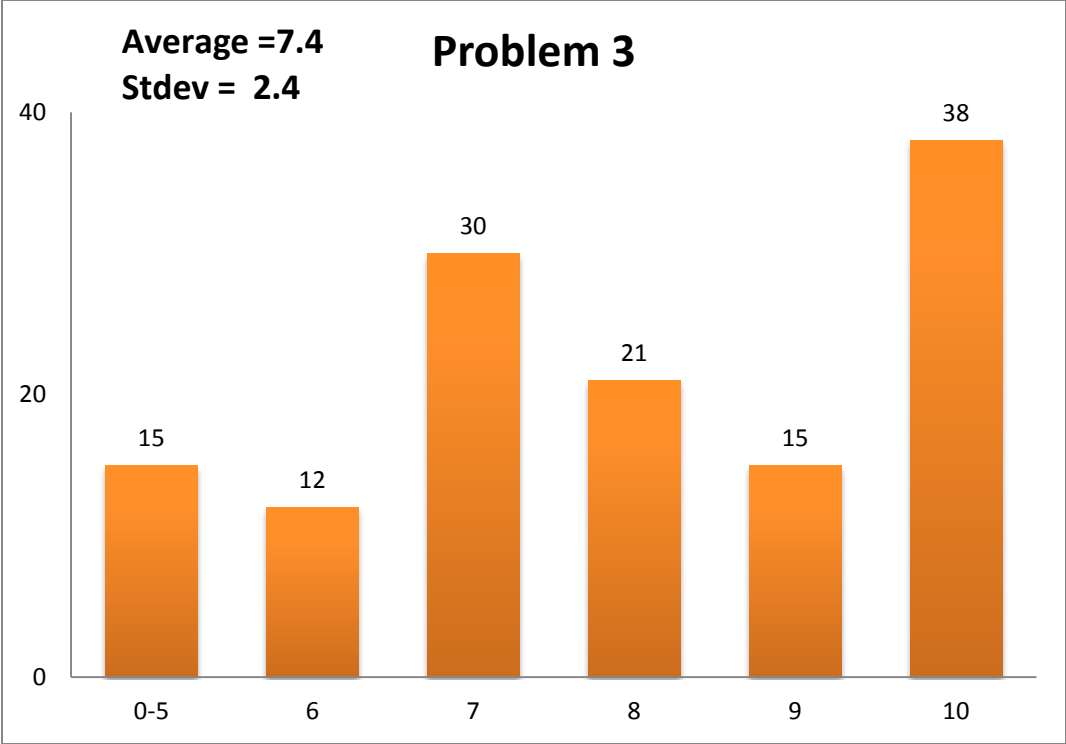
	Number of Students
Total	131
Attended	130
Missed	1
Makeup	1

2. Overall distribution



3. Distribution for each problem





Comparison with previous years



4. Common mistakes

1) Problem 1

- Students incorrectly used the manometer to solve for pressure
- Students attempted to use Bernoulli's Equation to solve for pressure instead of monometer equation

2) Problem 2

- Forgetting head loss in the energy equation and if they did remember it they neglected to multiply it by the specific weight
- Wrong signs in the momentum equation
- Many students neglected to include $\sin 30$ in the momentum equation and many others used $\sin 30$ at inappropriate times

3) Problem 3

- Applying boundary conditions at wrong location (using $y=h/2$ or $-h/2$ instead of $y=h$ or $-h$)
- Computing shear stress at wrong location ($y=h$ instead of $y=0$)
- Minor mistakes when integrating the governing equation

4) Problem 4

- Having the wrong units for Δp per unit length
- Not solving for Q to find the factor by which it will change

5. Comments

- The average and standard deviation for the average score over six years is 79.7 and 3.9, respectively. Therefore the average score for 2014 is within the standard deviation over the six years