

# Overall Grades

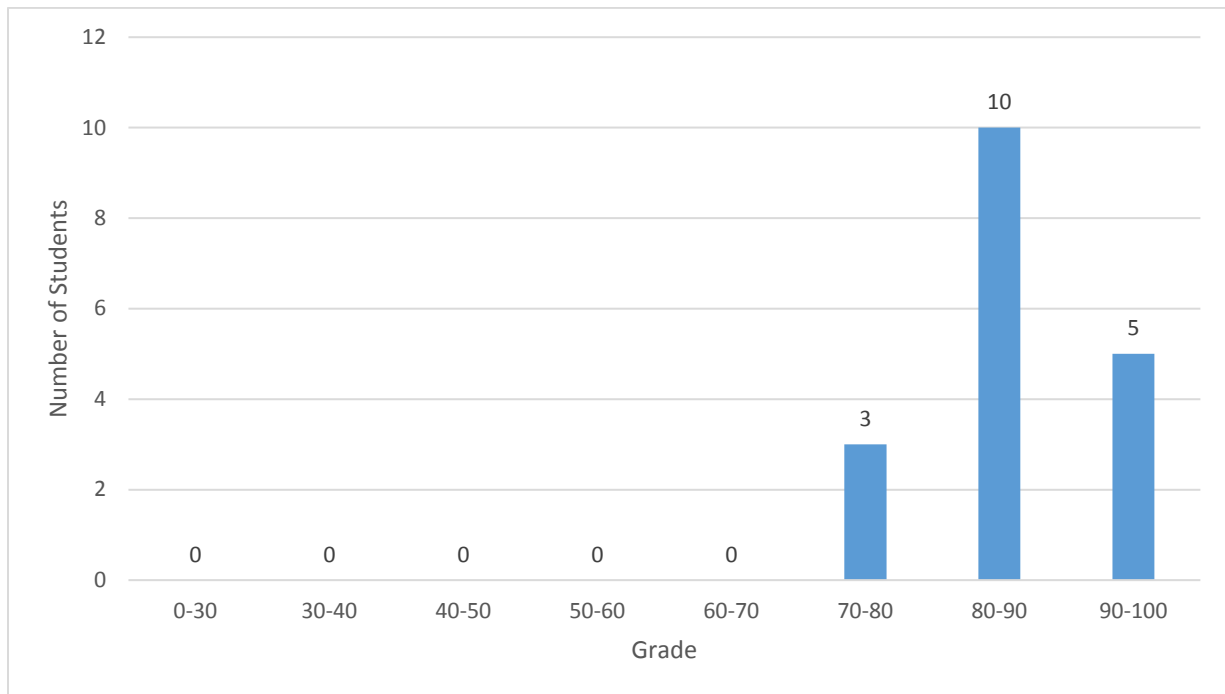
12/13/2017

## 1. Summary

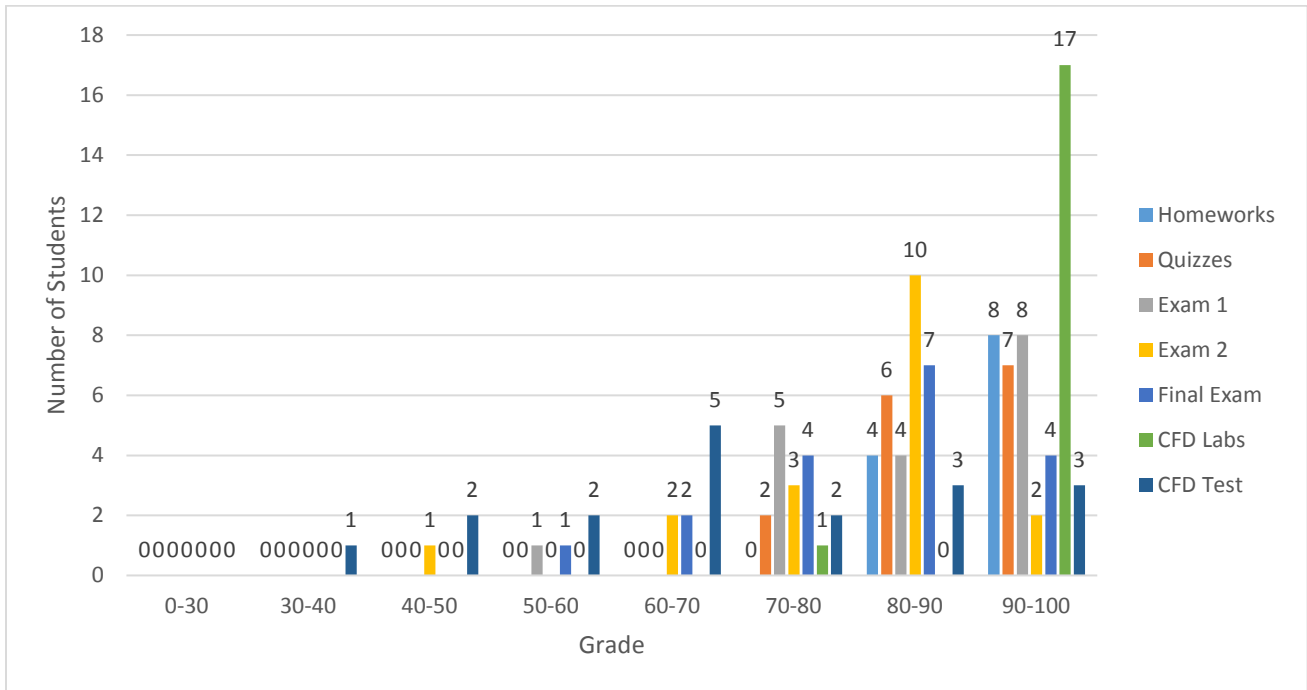
Total number of students	18
Number of undergraduate students	10
Number of graduate students	8

		Homework	Quizzes	Exam 1	Exam 2	Final Exam	CFD Labs	CFD Test	Total
Weight		0.1	0.15	0.125	0.125	0.25	0.2	0.05	1
Total	Avg.	95.7	92.4	86.5	80.7	81.9	95.6	71.5	87.5
	Sd.	8.6	8.0	11.9	11.0	12.2	6.4	18.2	6.8
Undergraduate	Avg.	99.5	87.7	80.3	74.8	75.1	96.8	65.0	83.9
	Sd.	8.5	6.1	12.6	10.8	10.6	2.3	11.2	6.1
Graduate	Avg.	90.8	98.3	94.3	88.0	90.3	94.1	79.6	92.0
	Sd.	6.2	6.1	4.2	5.9	8.3	9.3	22.6	4.5

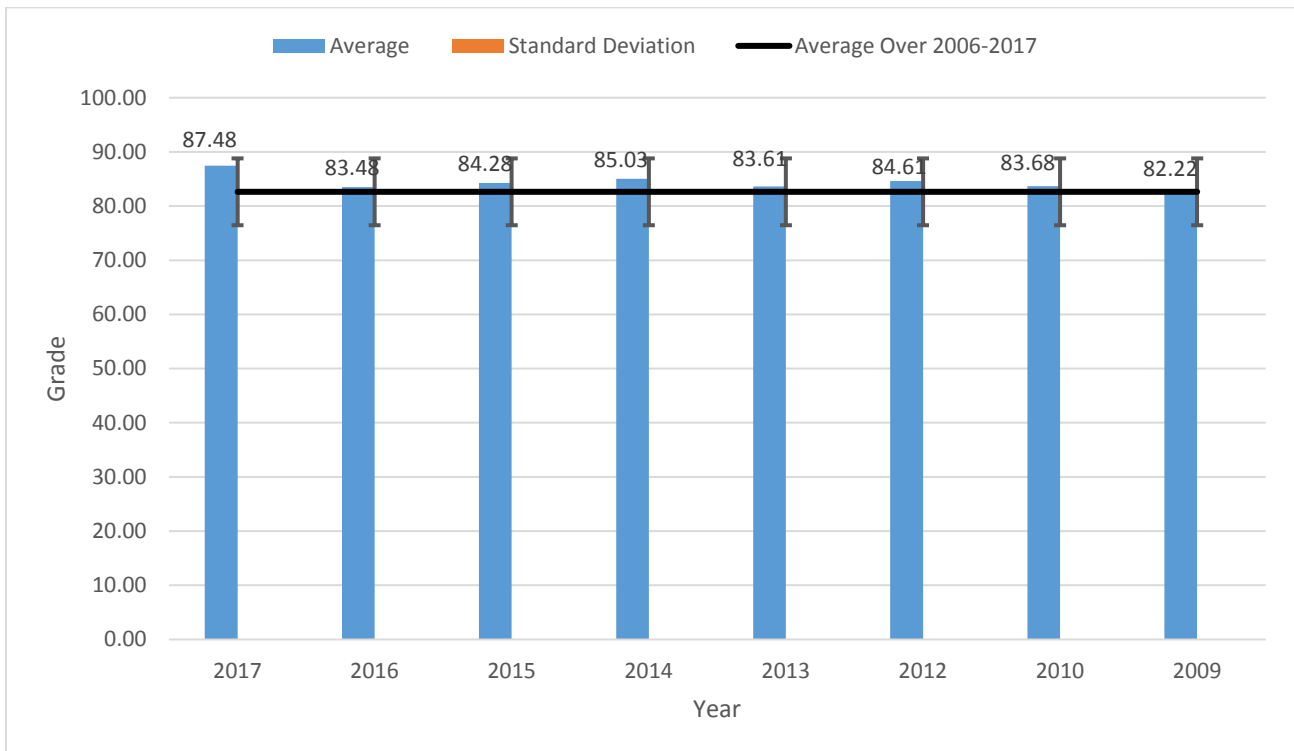
## 2. Total Grade distribution



### 3. Breakdown of grades



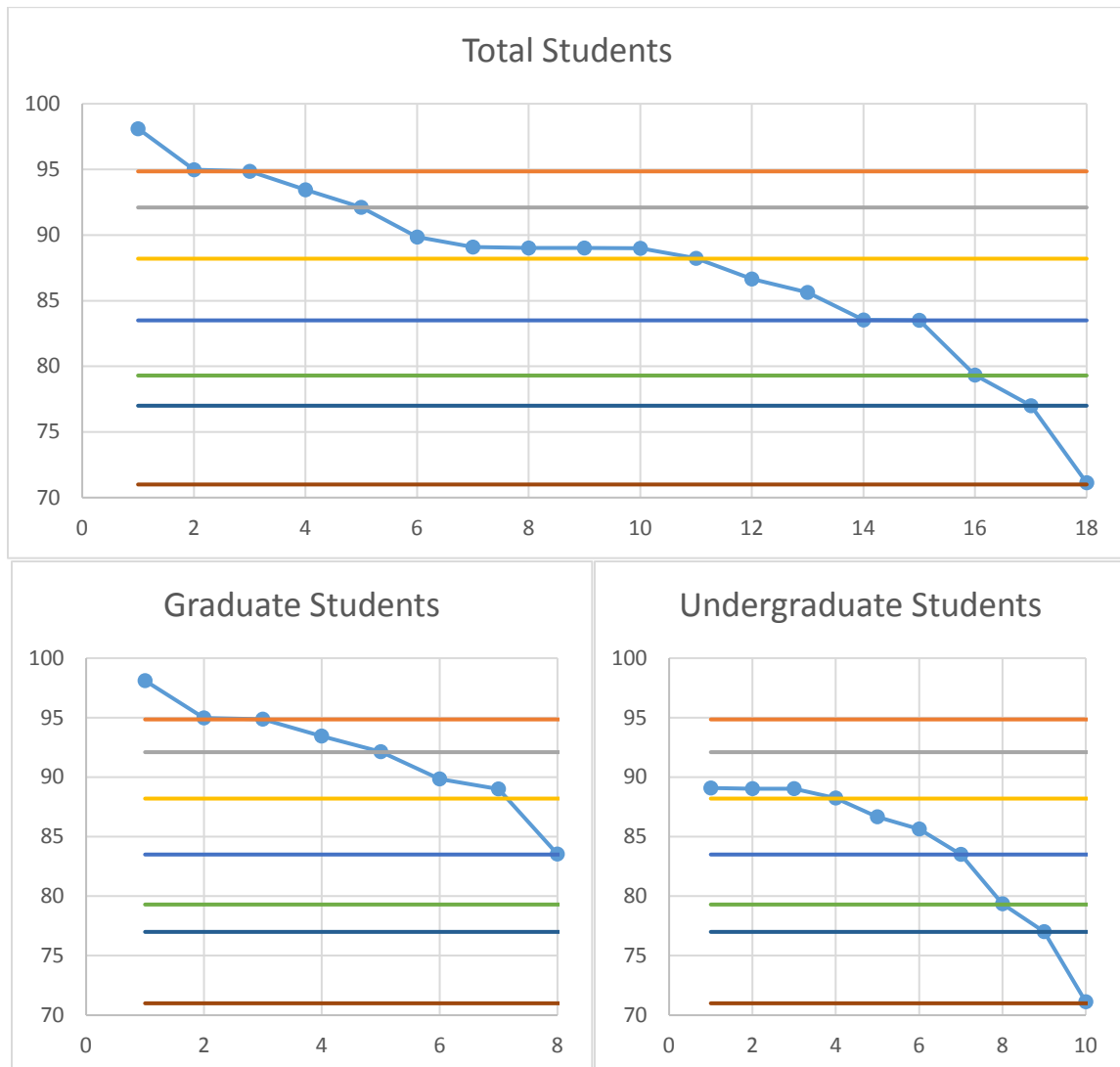
### 4. Comparison with previous years



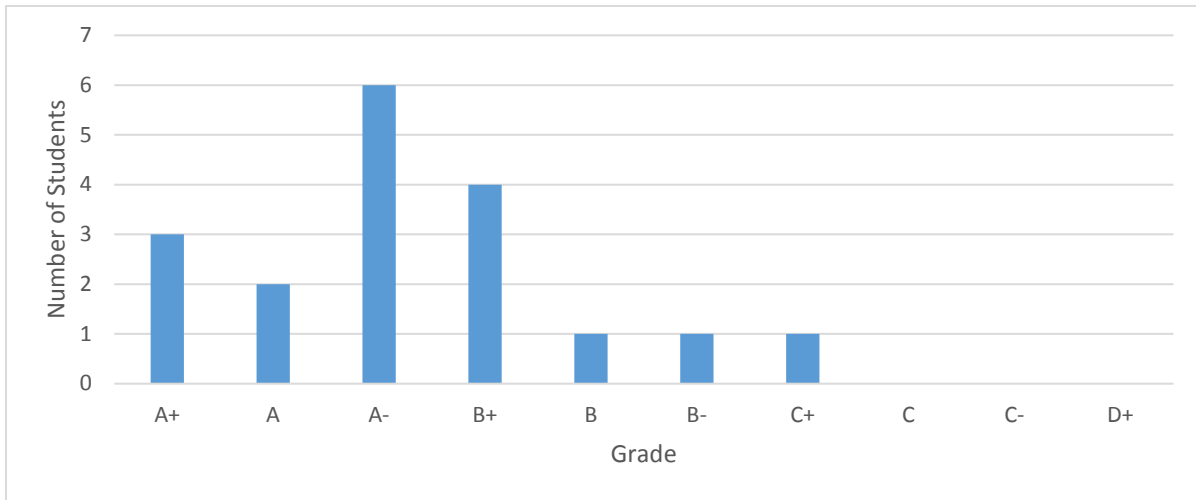
## 5. Grade ranges

Letter Grade	Score
A+	>= 94.85
A	>= 92.1
A-	>= 88.2
B+	>= 83.5
B	>= 79.3
B-	>= 77
C+	>= 71
C	>= 68
C-	>= 64
D+	>= 60

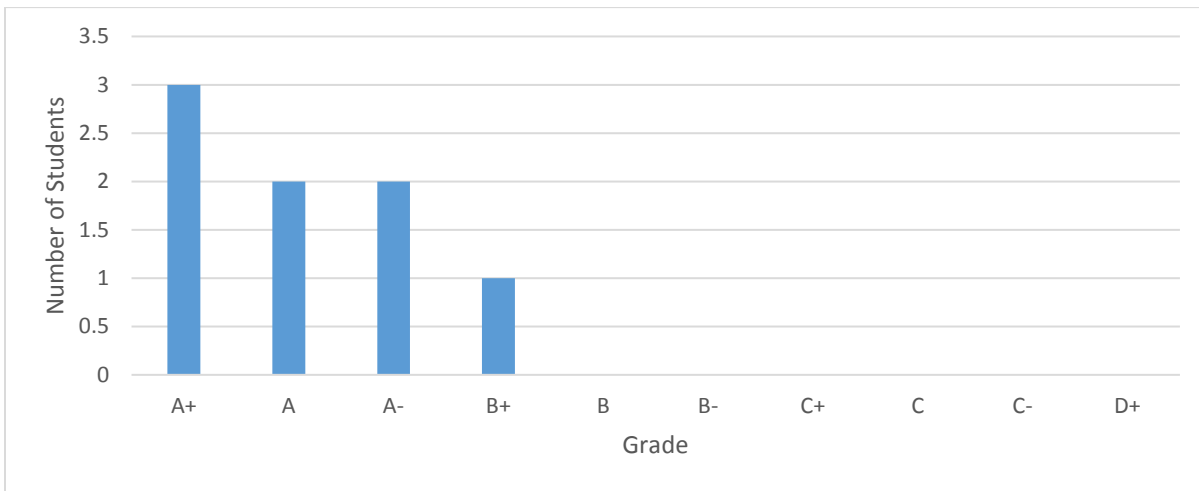
## 6. Ranges cutoffs



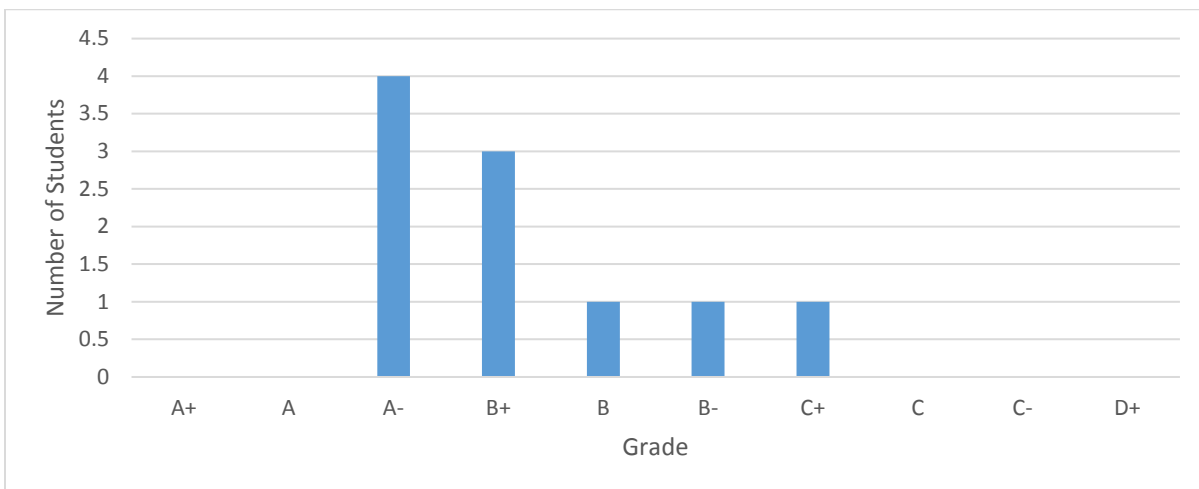
**7. Total grade distribution**



**8. Graduate students grade distribution**



**9. Undergraduate students grade distribution**



**10. Comparison of grade distribution with previous years**

