

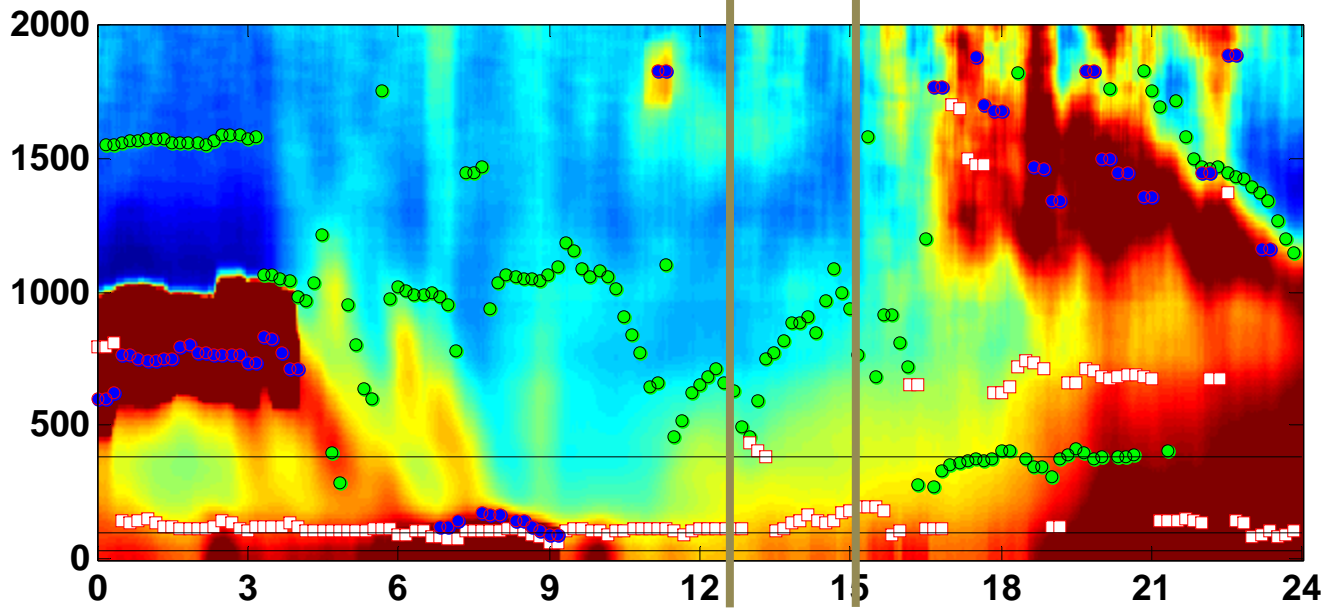
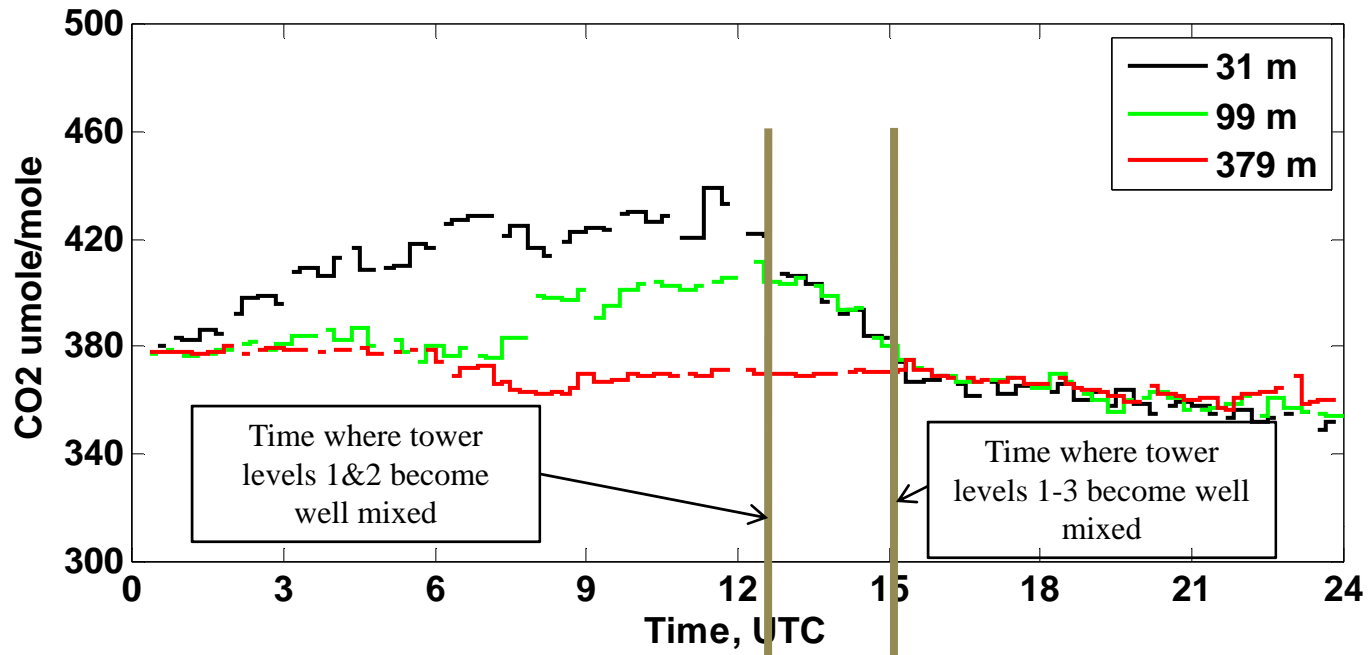
Appendix E
WBI – Ceilometer/MLH and
CO2 Time Series

Charles Stanier

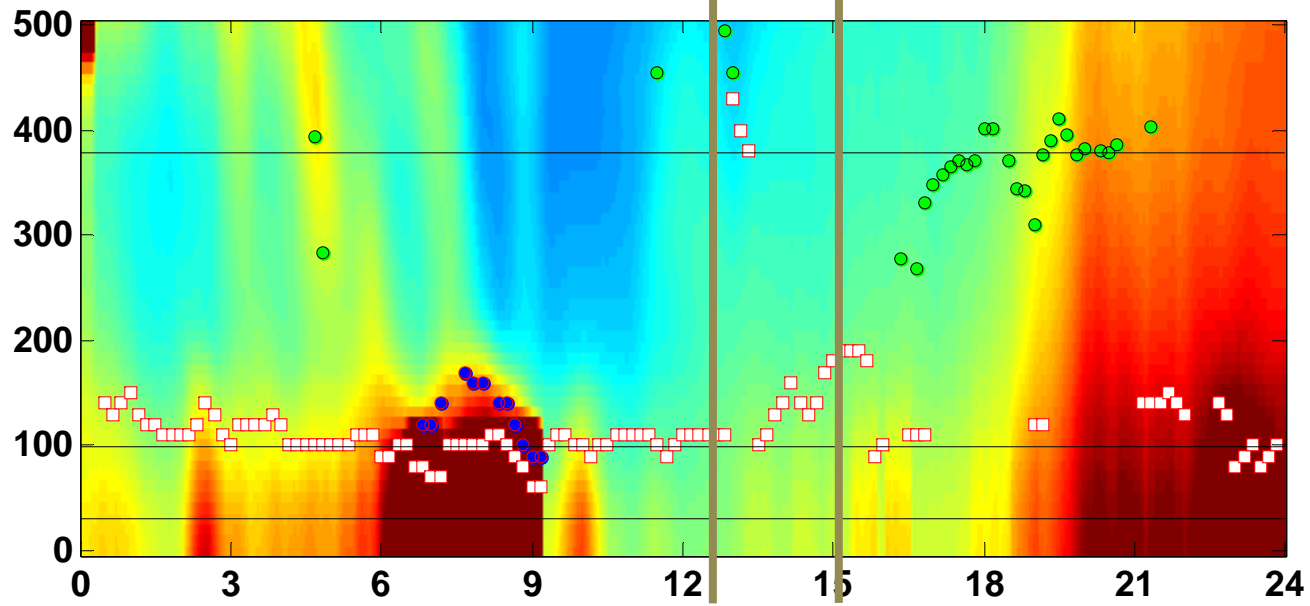
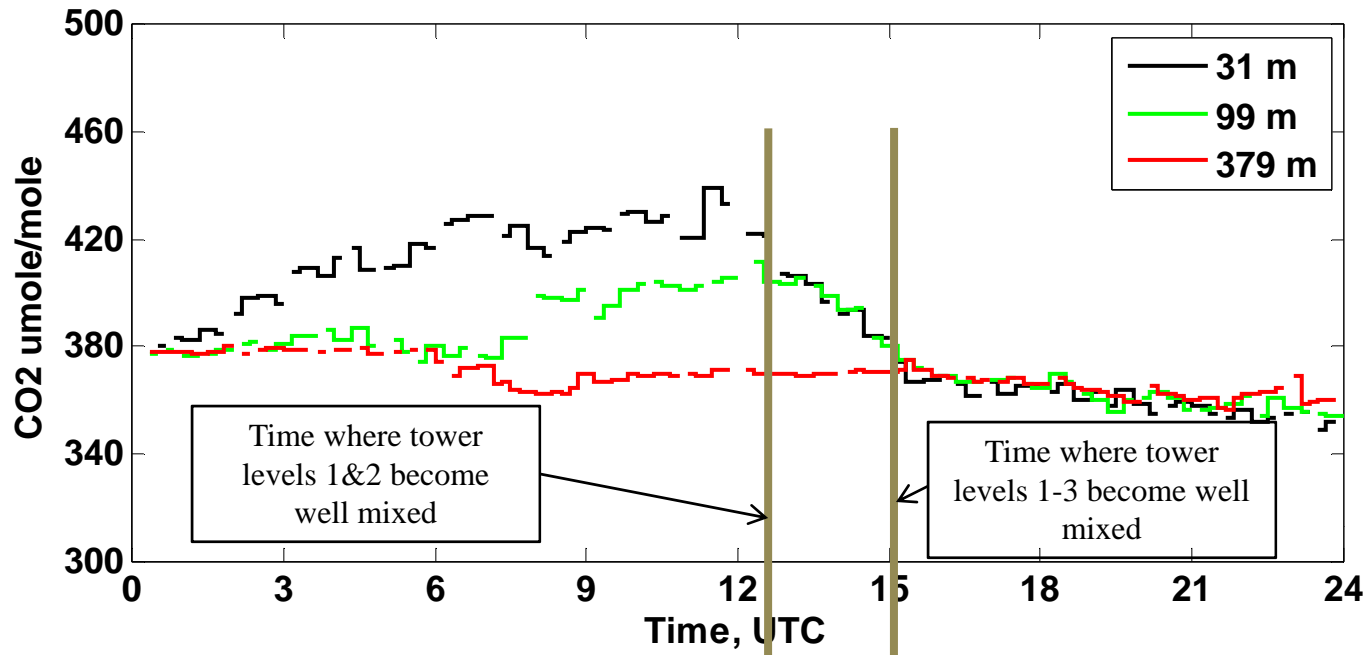
Jameson Schoenfelder

University of Iowa

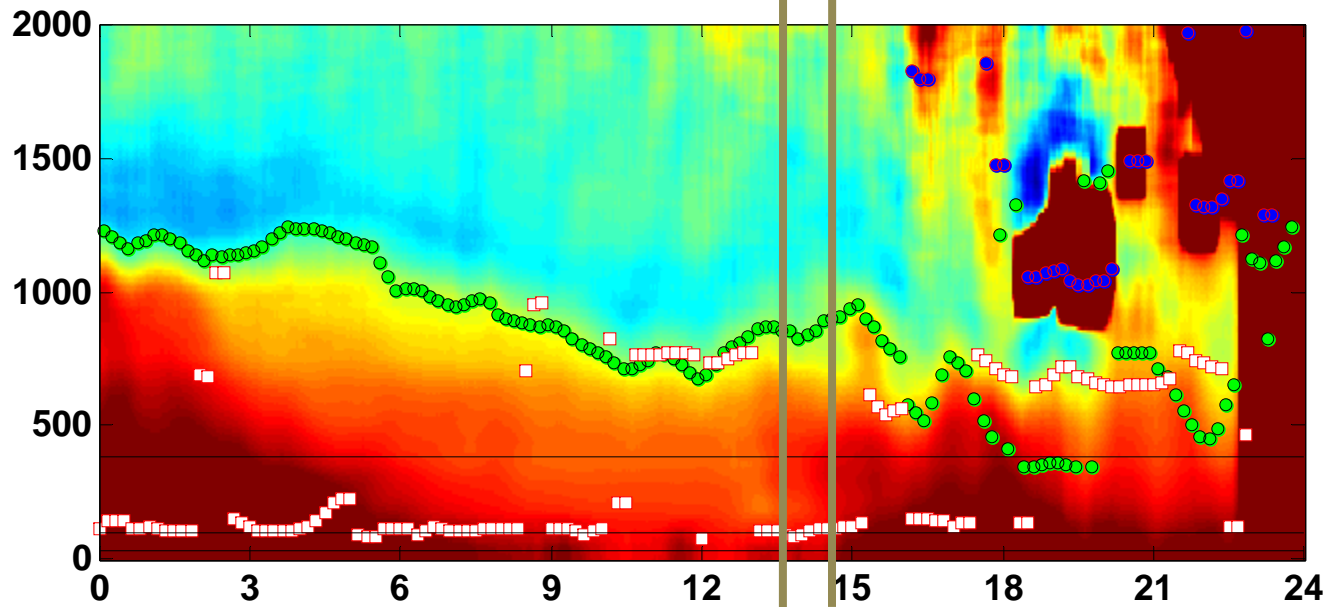
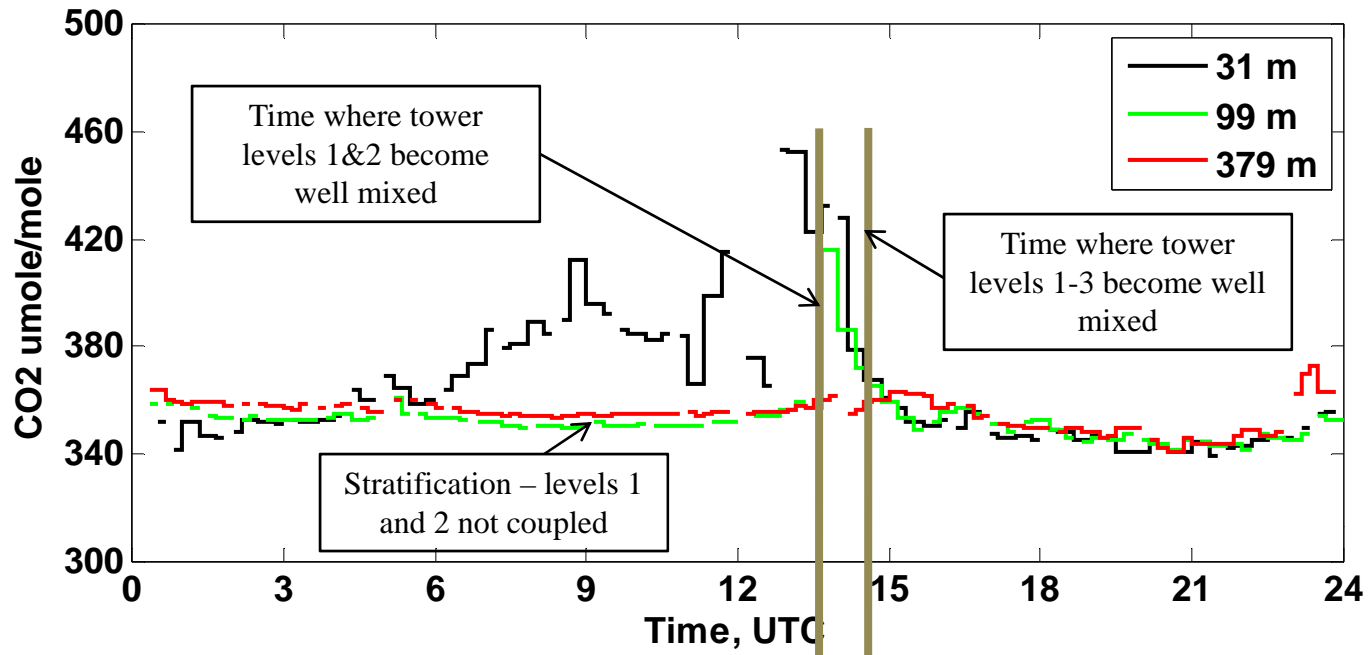
CL31 and CO2 time series at WBI on 26-Jul-2008



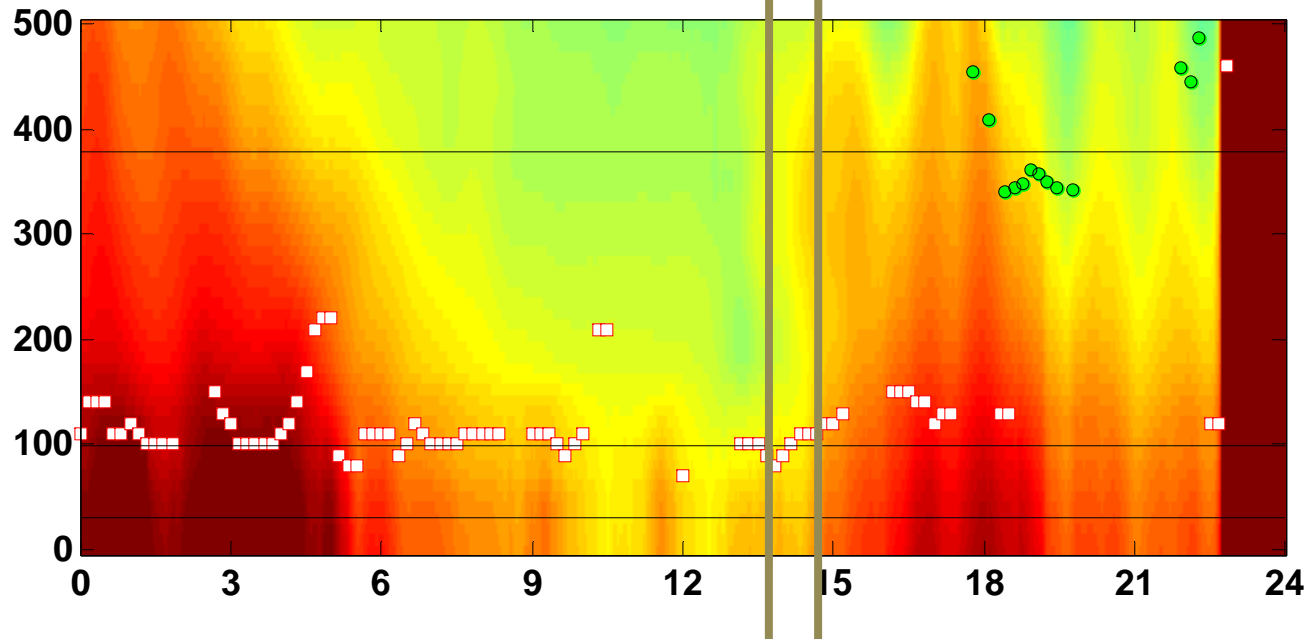
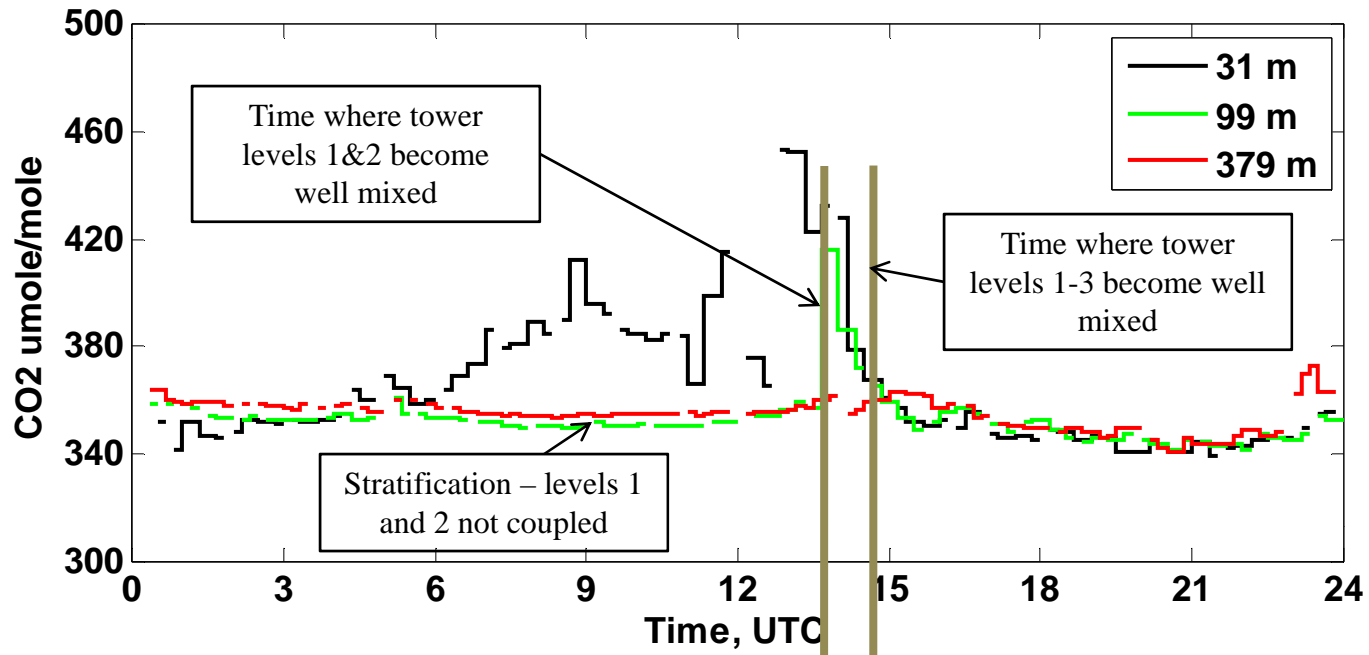
CL31 and CO2 time series at WBI on 26-Jul-2008



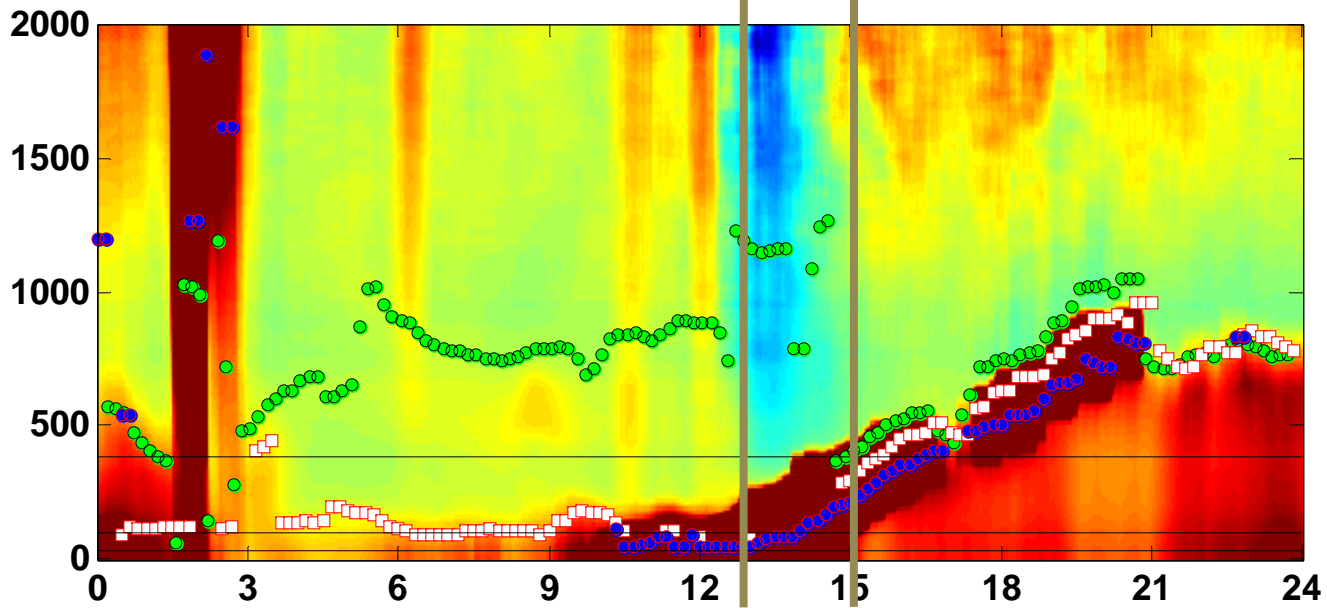
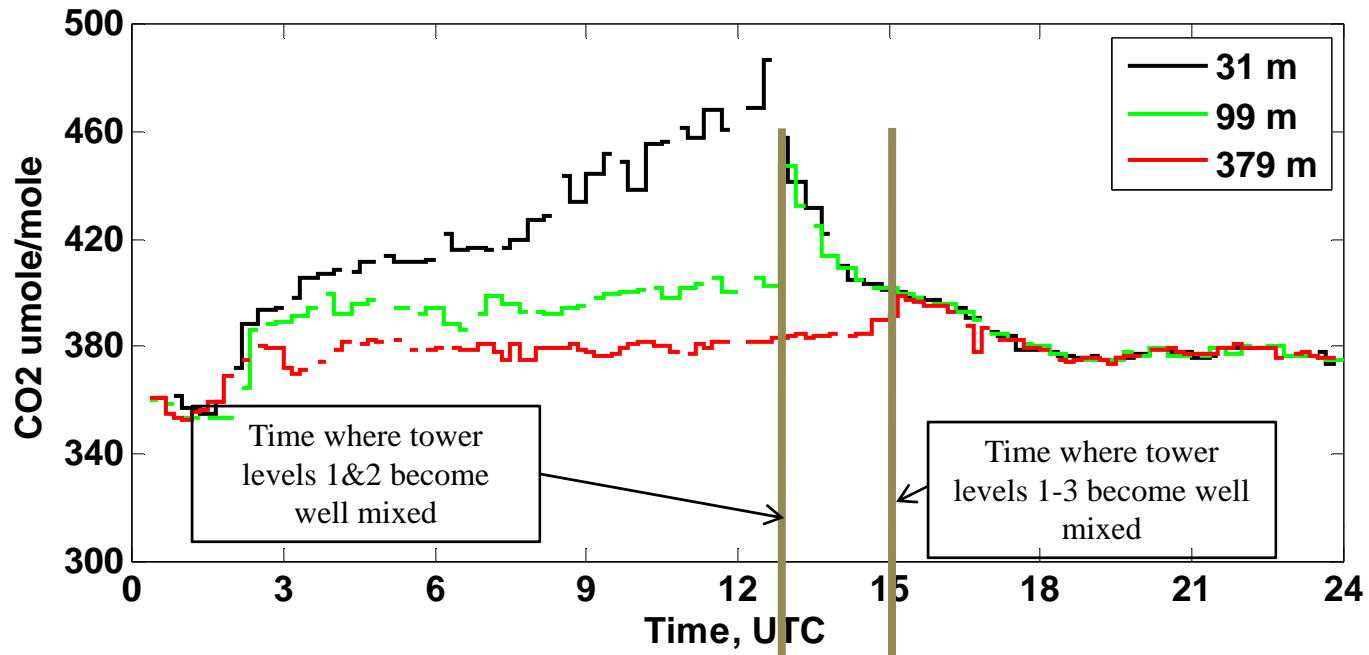
CL31 and CO2 time series at WBI on 27-Jul-2008



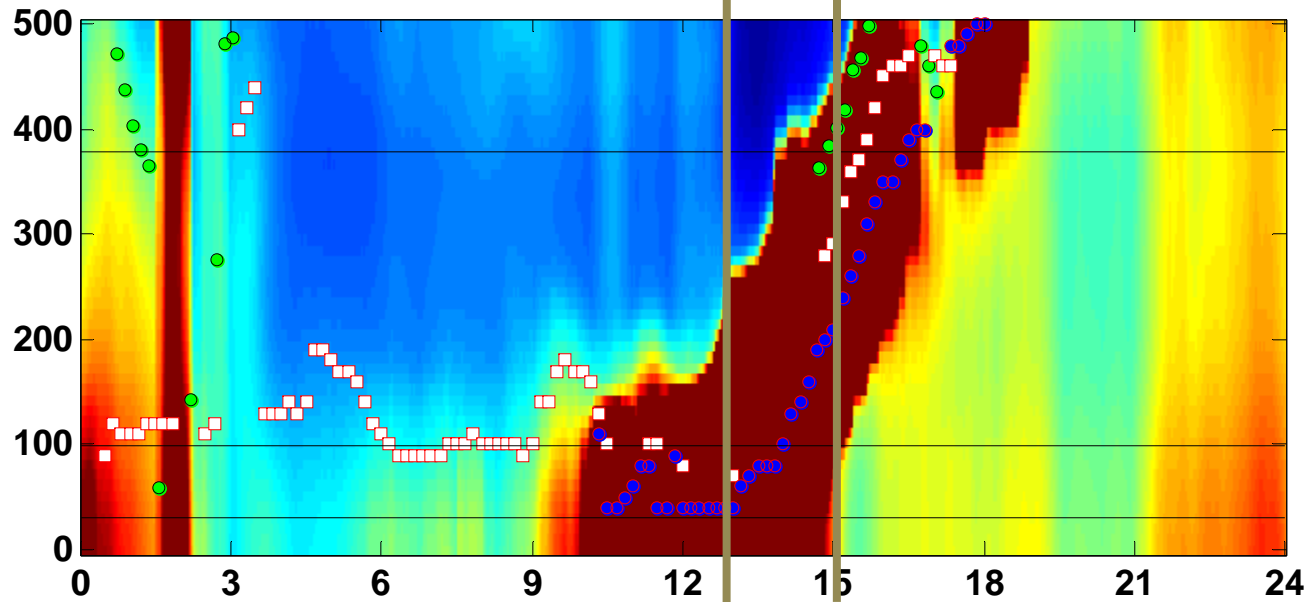
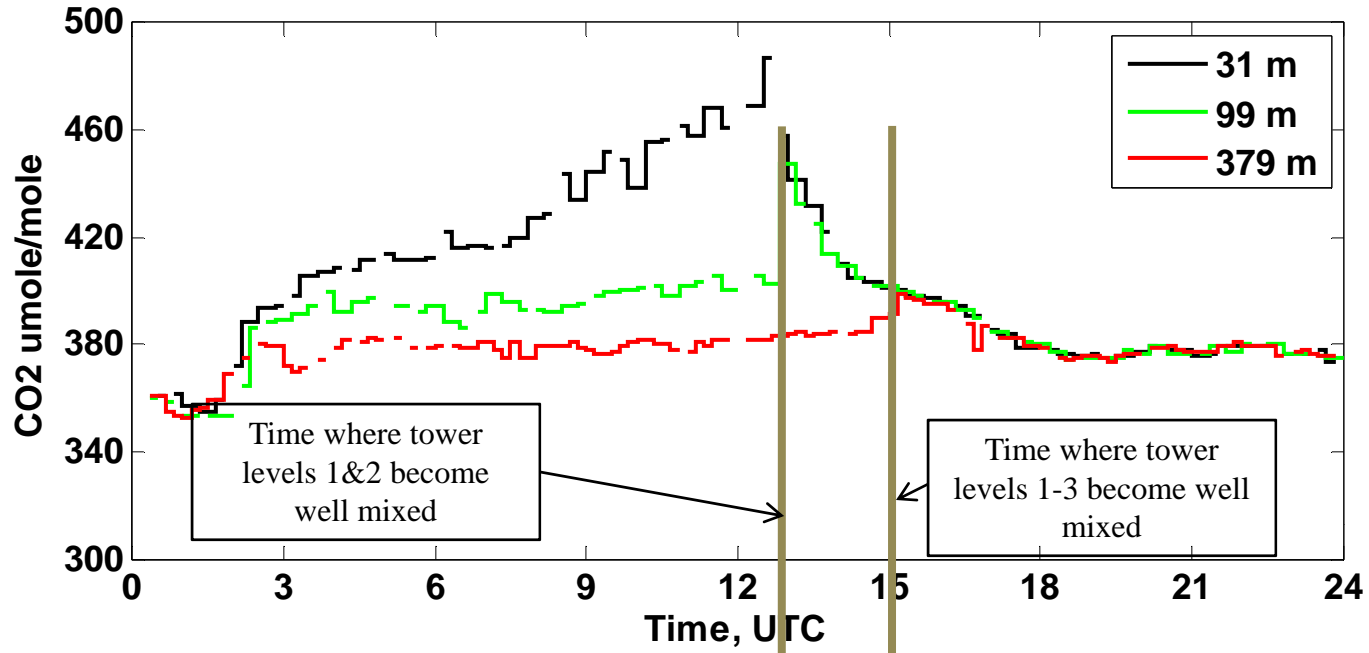
CL31 and CO2 time series at WBI on 27-Jul-2008



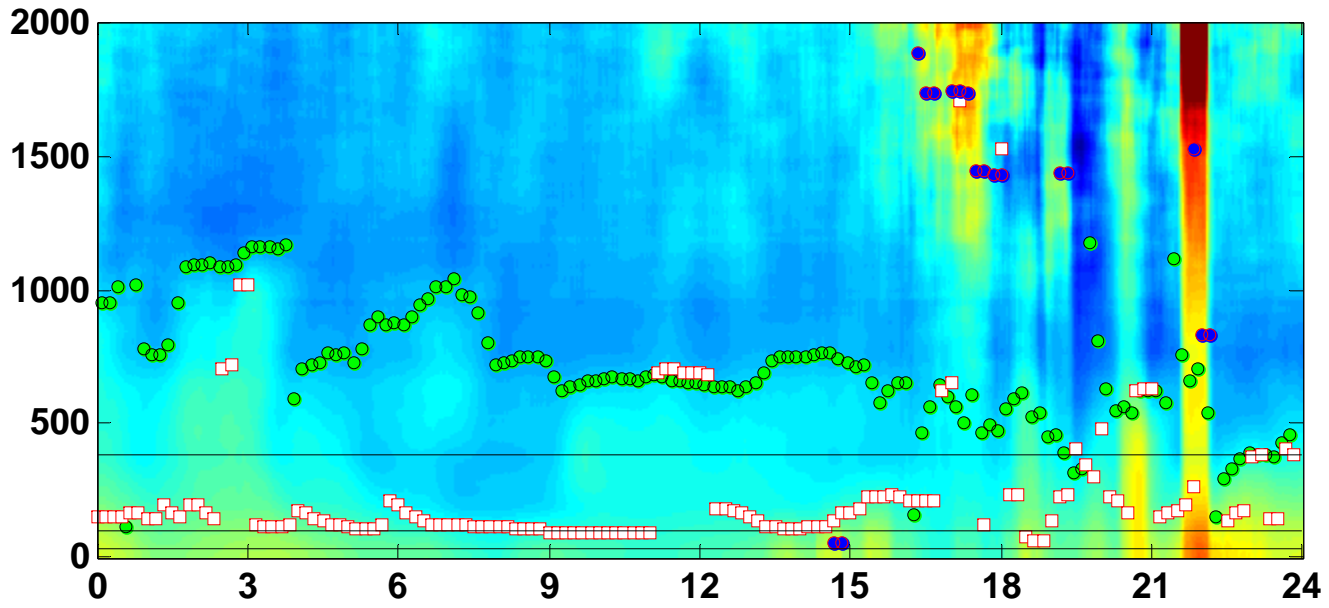
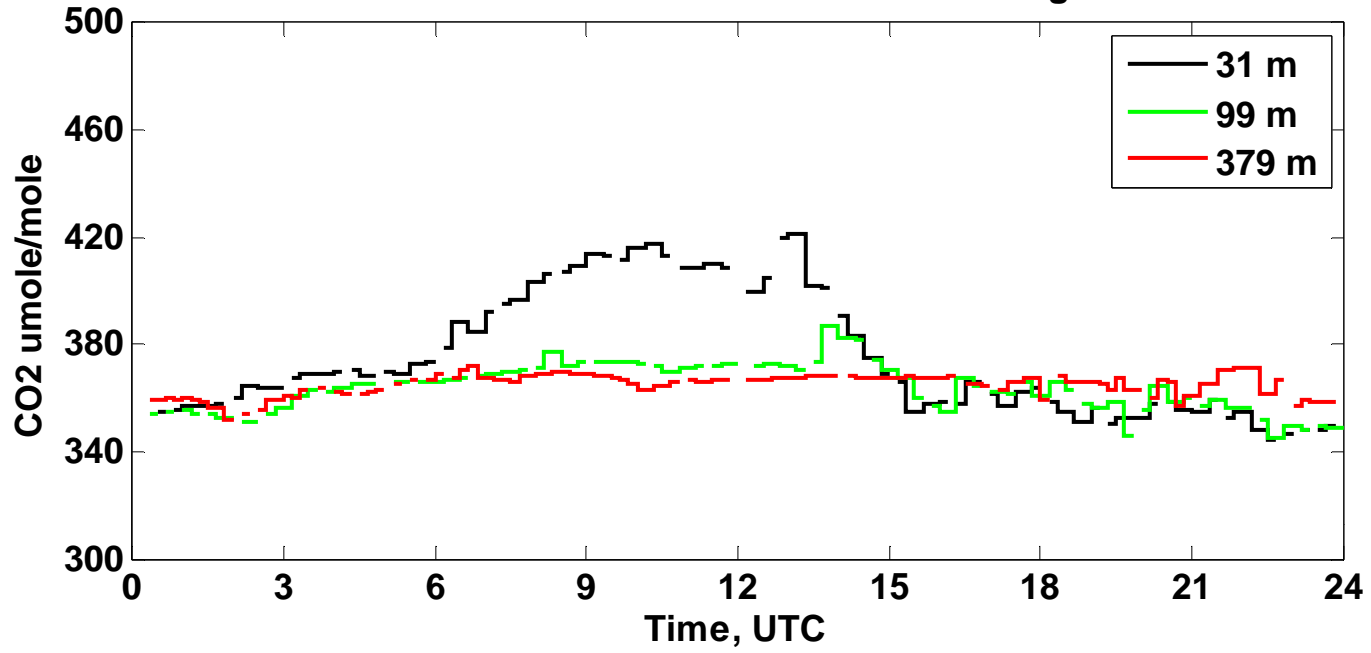
CL31 and CO2 time series at WBI on 28-Jul-2008



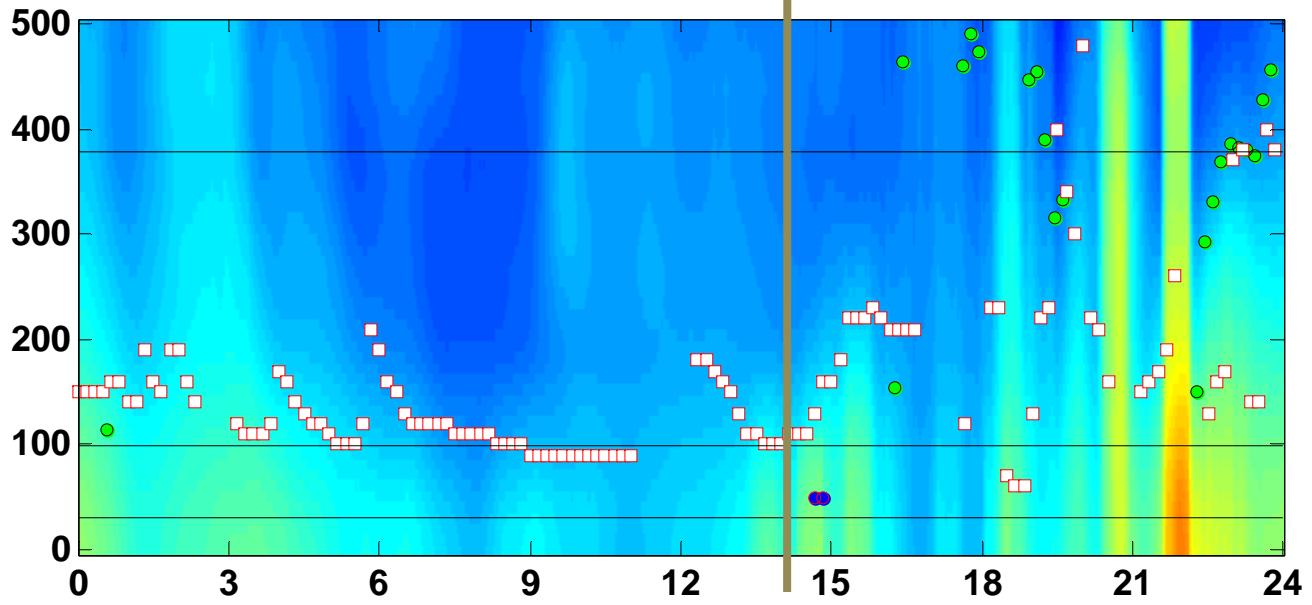
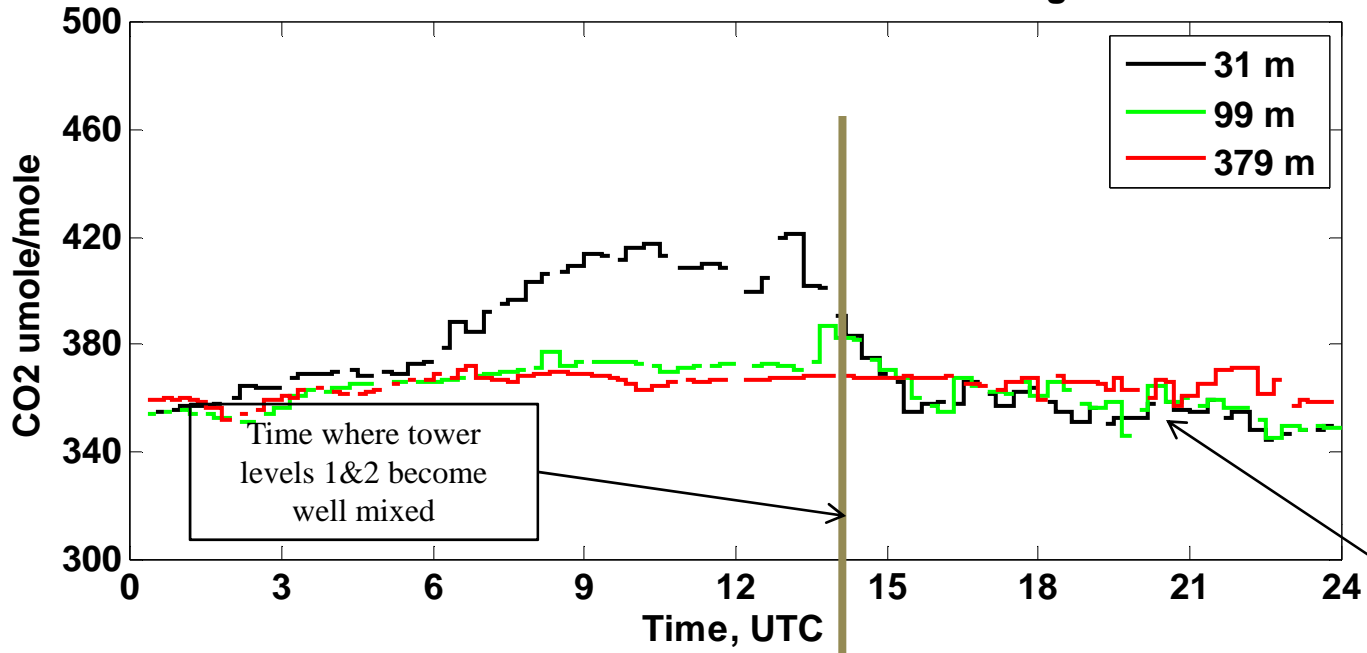
CL31 and CO2 time series at WBI on 28-Jul-2008



CL31 and CO2 time series at WBI on 06-Aug-2008

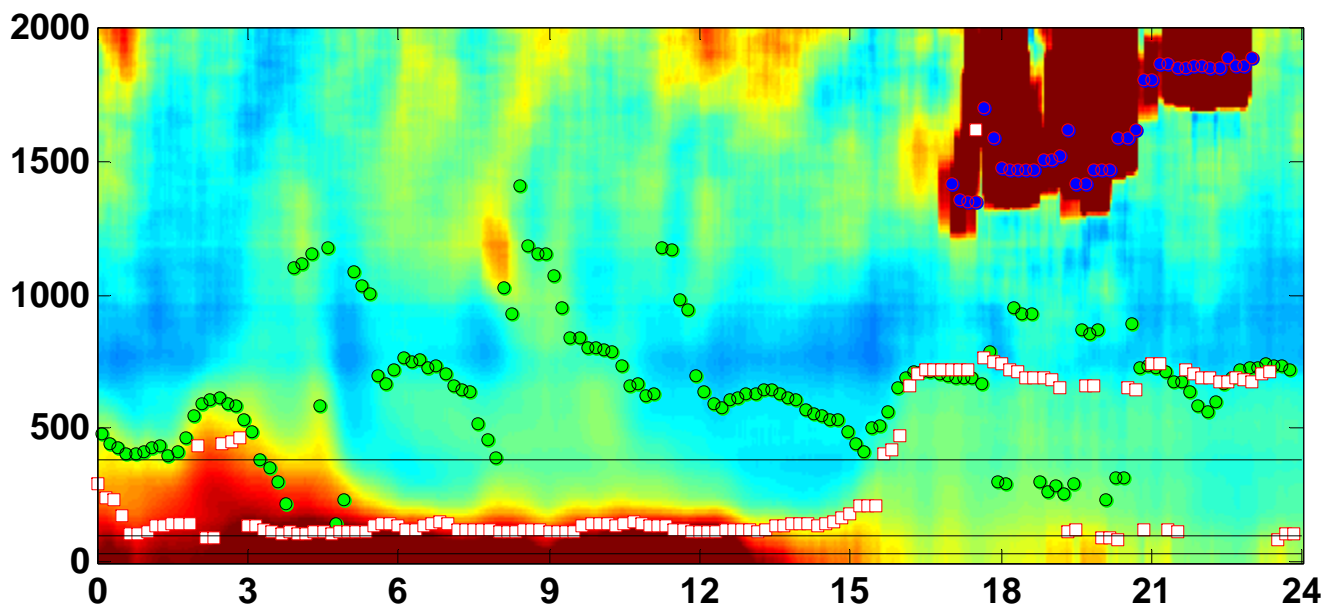
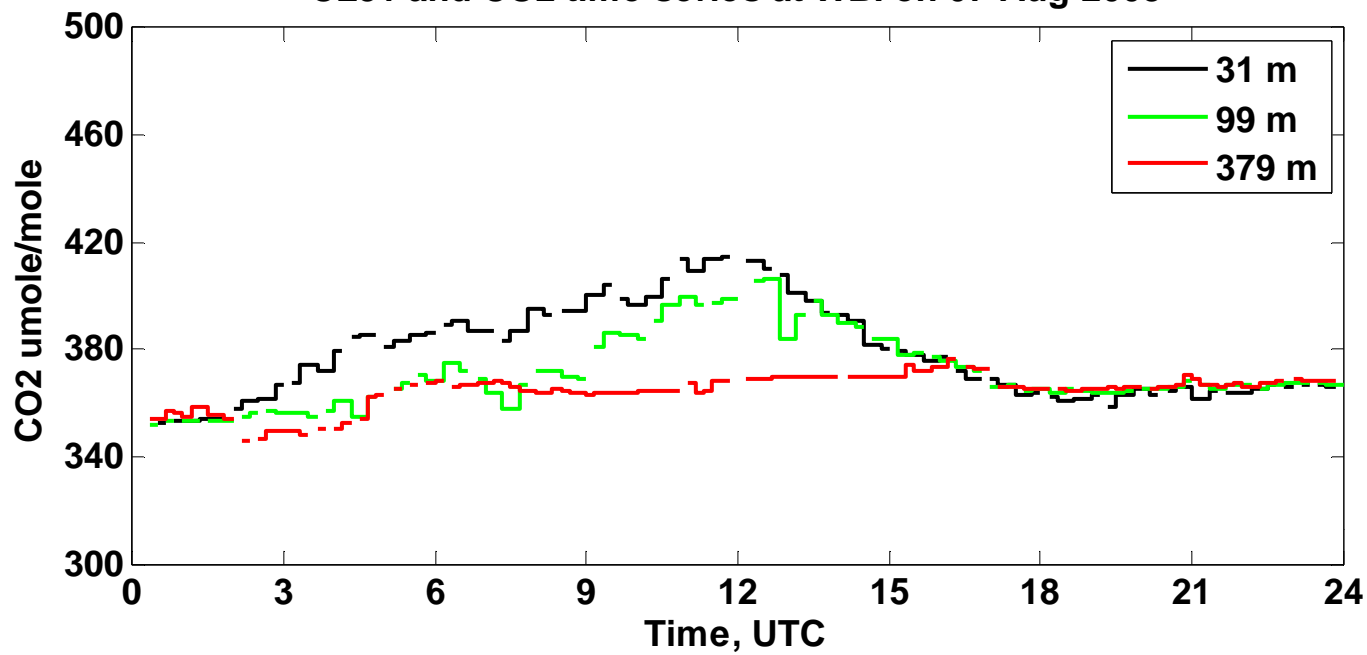


CL31 and CO2 time series at WBI on 06-Aug-2008

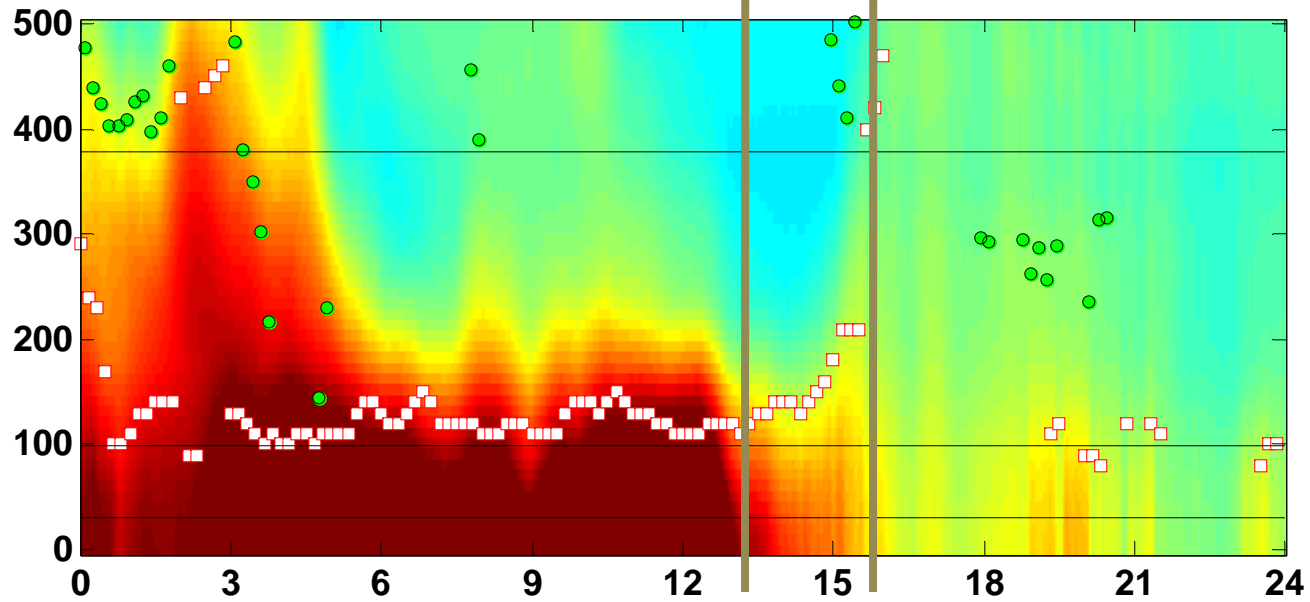
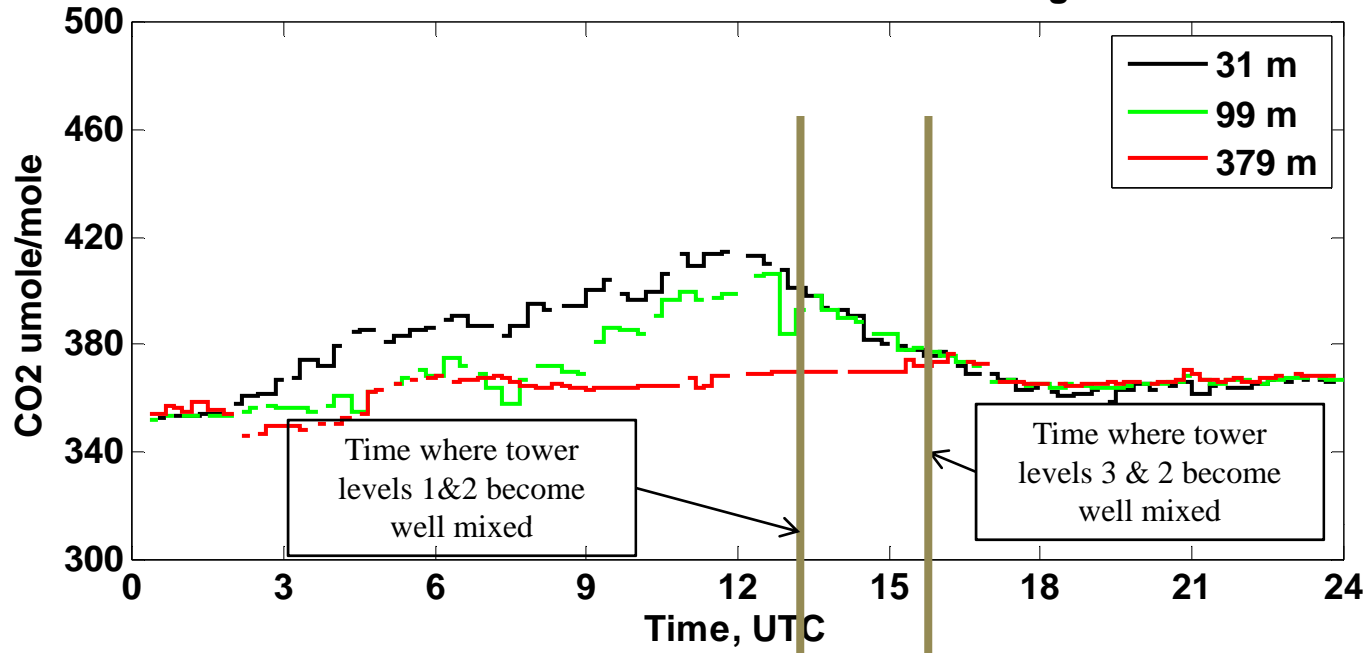


Level 3 never becomes well coupled with 1 and 2. Note right before 2:100 UTC where the do seem more coupled is when the MLH shoots up briefly.

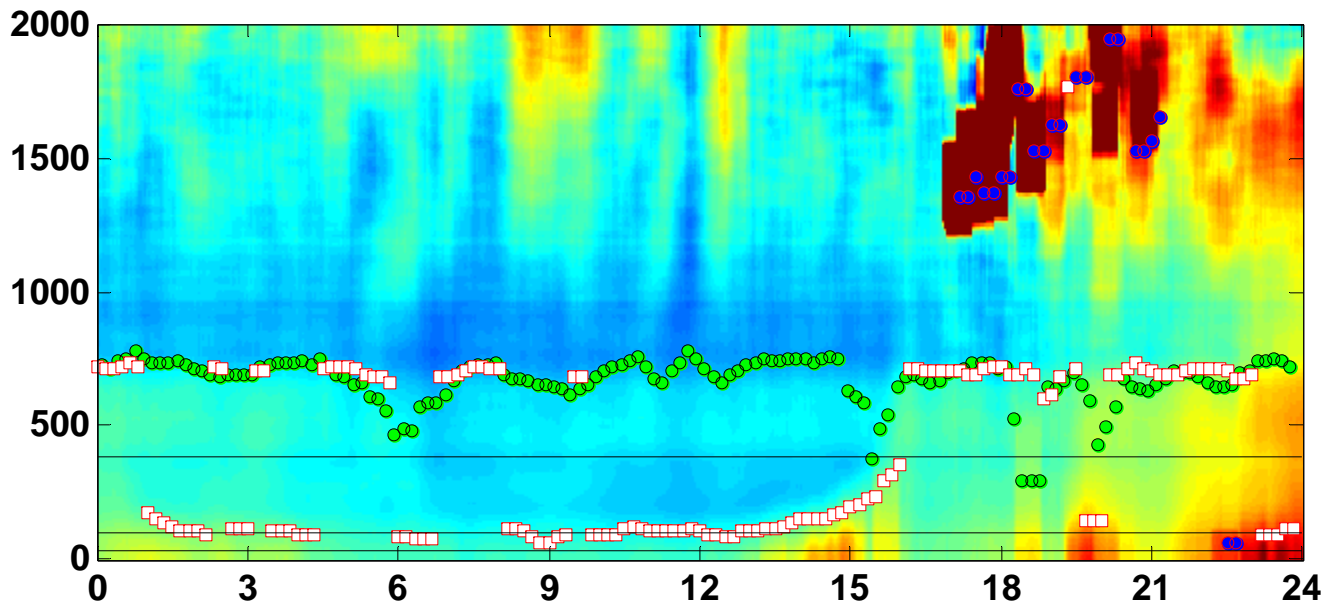
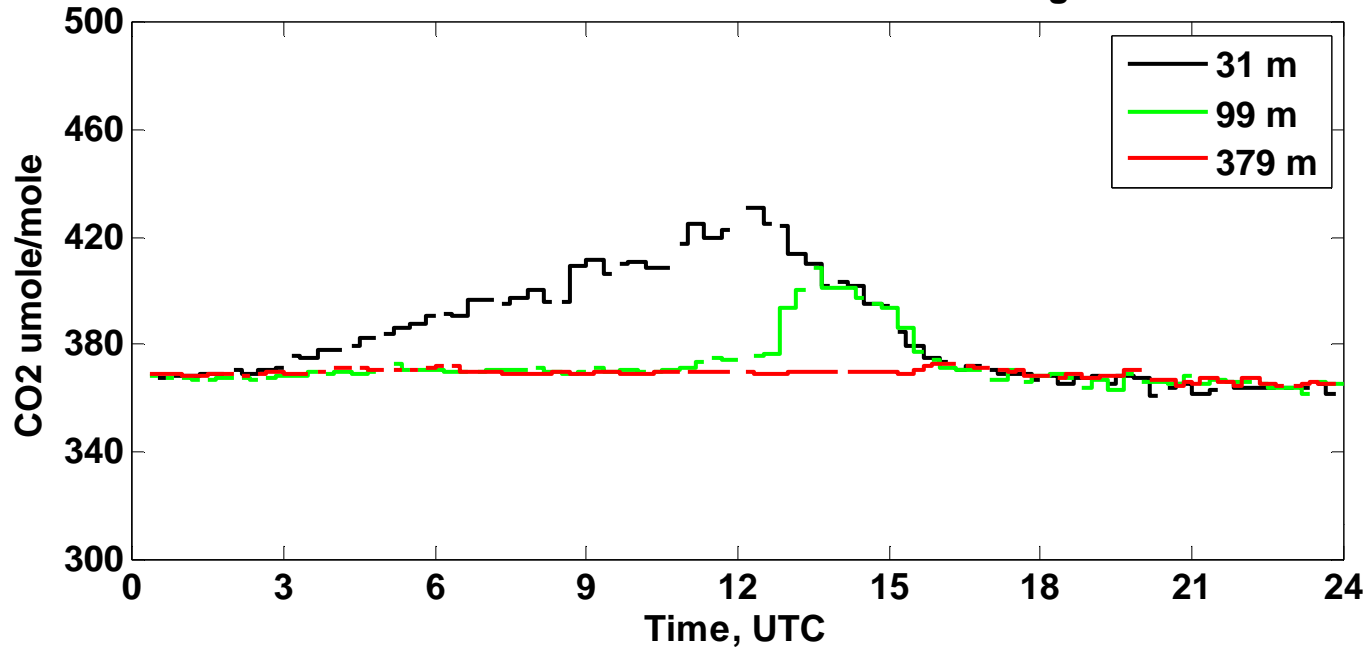
CL31 and CO2 time series at WBI on 07-Aug-2008



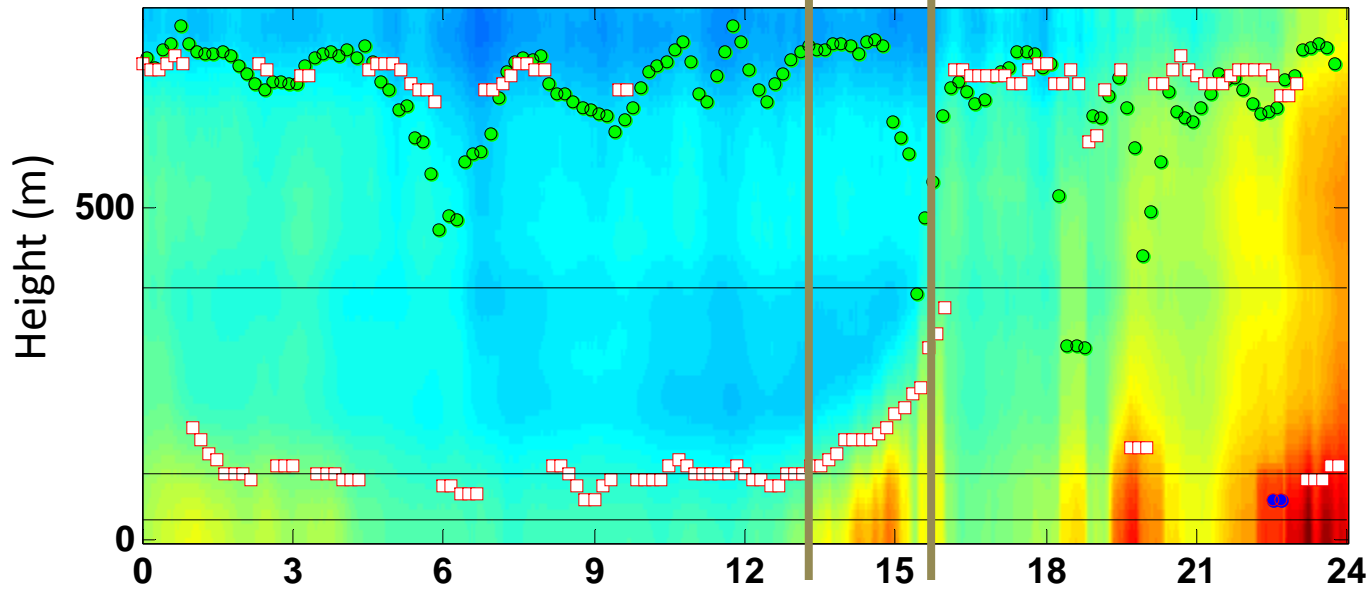
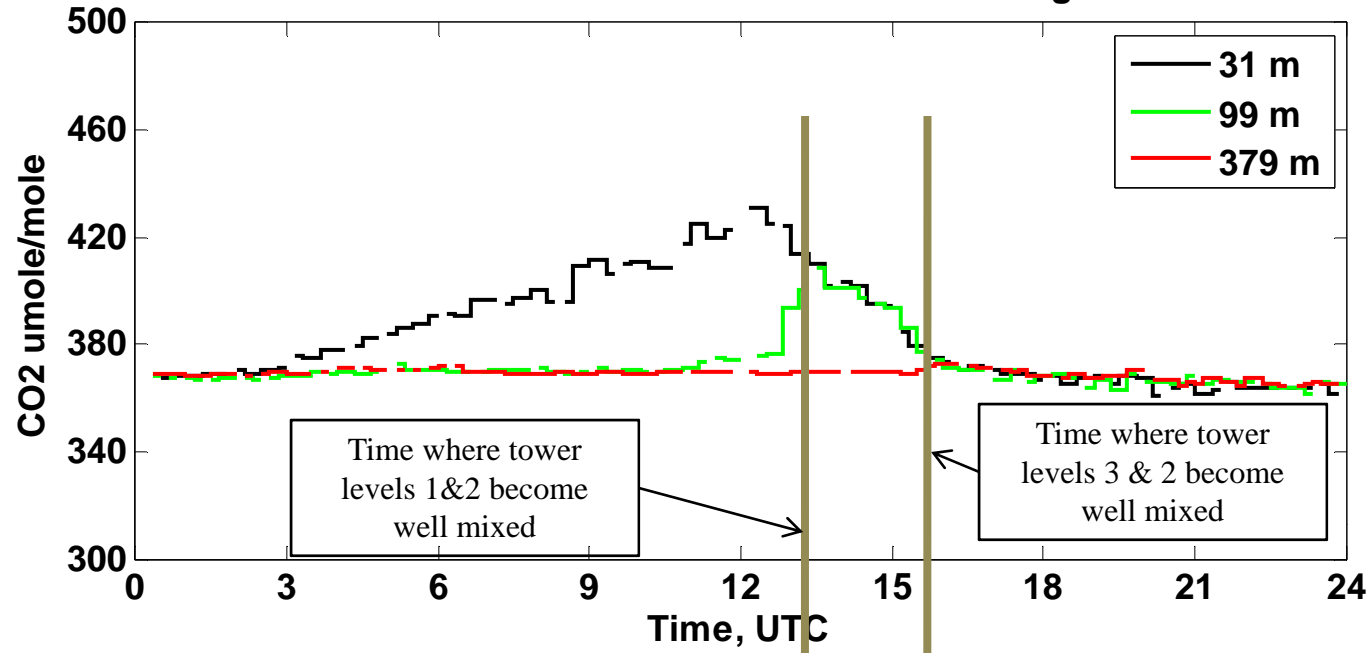
CL31 and CO2 time series at WBI on 07-Aug-2008



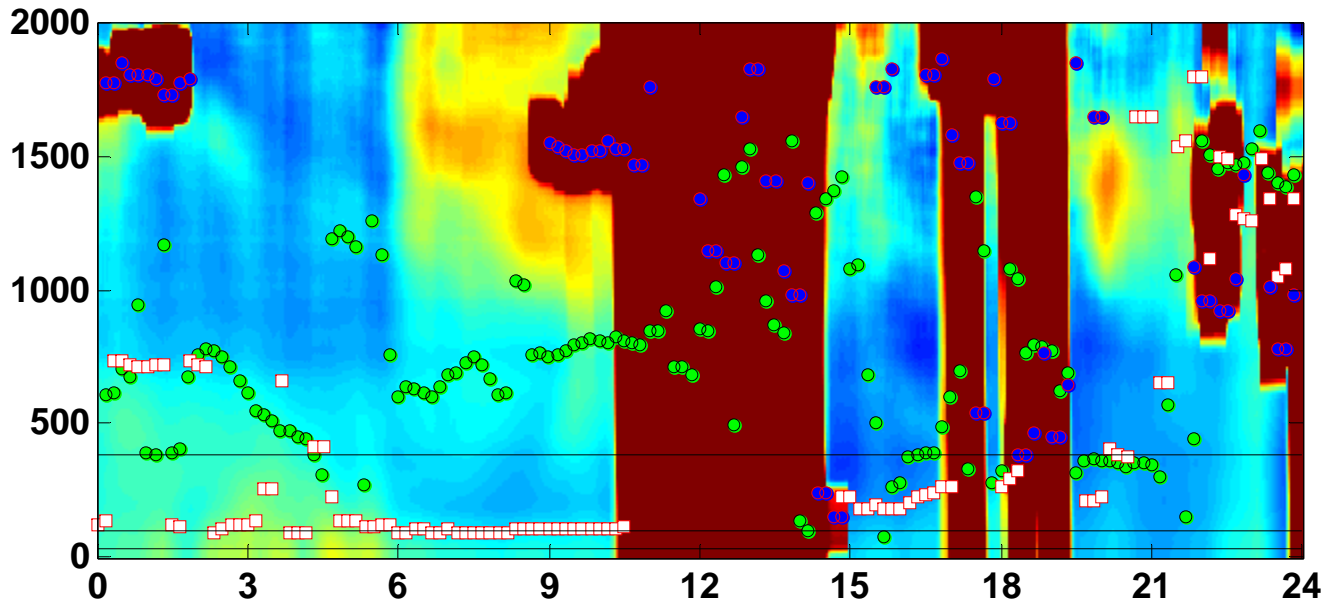
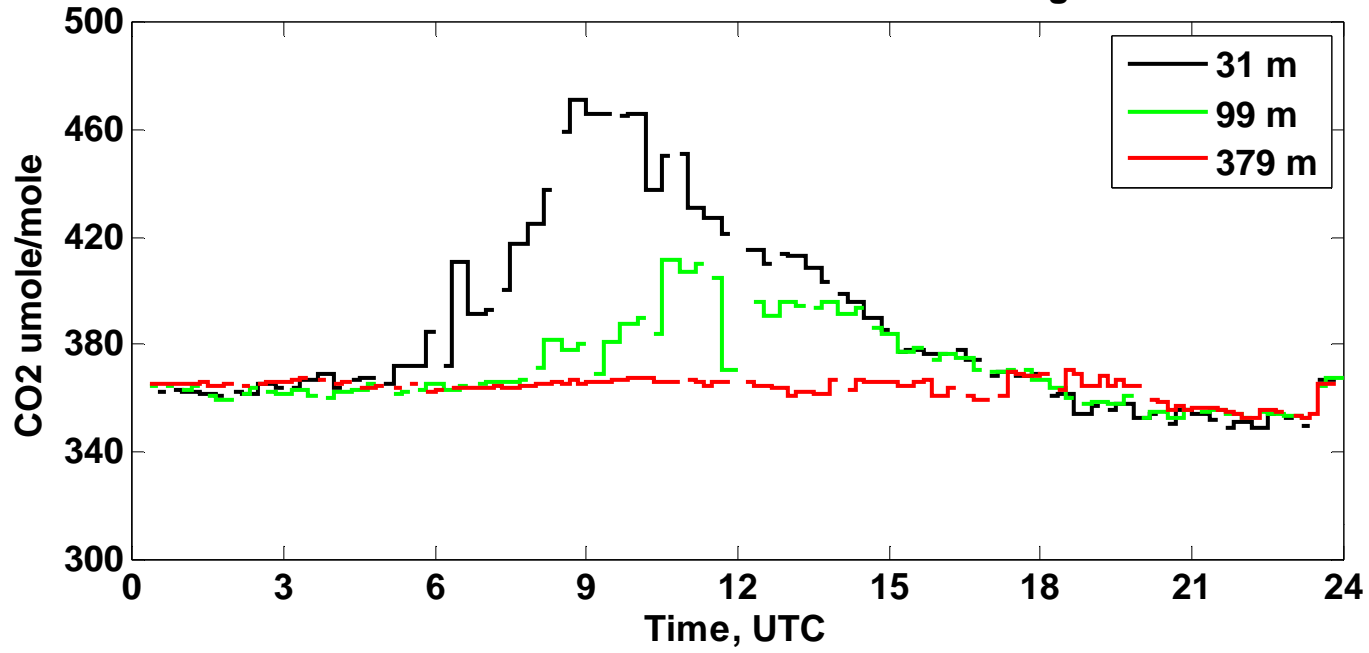
CL31 and CO2 time series at WBI on 08-Aug-2008



CL31 and CO2 time series at WBI on 08-Aug-2008



CL31 and CO2 time series at WBI on 09-Aug-2008



CL31 and CO2 time series at WBI on 10-Aug-2008

